

# The Gate Post

11th September 2018

\$1 (inc GST)

Vol 20 Issue 17



NEWDEGATE  
MACHINERY  
FIELD DAYS



Congratulations  
Newdegate on  
another  
successful Field  
Days!!

Good Weather

Great Food

Entertainment  
Galore

So much to see  
and do

For the complete rundown look inside



Produced at the Newdegate Community Resource Centre Inc.

Ph: 9871 1791 Fax: 9871 1792

Email: [newdegatecrc@westnet.com.au](mailto:newdegatecrc@westnet.com.au)



Department of  
Primary Industries and  
Regional Development

# The Gate Post

Thank you for your contributions towards this weeks Gatepost. Please send in your local news, photos and announcements to [newdegatecrc@westnet.com.au](mailto:newdegatecrc@westnet.com.au) or phone 9871 1791 by

**Tuesday 25th September @ 12 Noon (Public Holiday Mon 24th)**

Inclusion **cannot** be guaranteed after this time.

## Contents

Page 3	Great Southern Hearts for Drive Live
Page 4-5	Notice Board
Page 6-9	Shire of Lake Grace Community News
Page 10	Flowering Canola
Page 11	Lake Grace Hospital Page
Page 13	Bloom festival
Page 14& 15	Kids winter sports windup
Page 18	Local CRC Information
Page 19	Local CRC Information
Page 20	Biosecurity of WA Ag industries
Page 23	Puzzle Page
Page 25	Contacts
Page 26	Bayer Newdegate School Donation
Page 27	Updates for Skeleton Weed program

## NEXT EDITION

Wednesday  
26th September

## Advertising Costs (inc GST)

Full Page	\$35.00
1/2 Page	\$20.00
1/4 Page	\$14.00
1/8 Page	\$8.00

*All additions/changes to be in by  
12 noon the Monday prior to printing.*

## Newdegate CRC Opening Hours

Monday - Thursday  
8:30am - 12:00pm  
1:00pm - 4:30pm

Friday  
9am - 2:00pm

Saturday & Sunday  
CLOSED



Printing, Scanning, Desktop Publishing, Binding, Laminating, Label Making, Faxing, Emailing, Stationary Supplies, IT Support, Exam Supervision, Local Information, Pop-Up Shops, Video Conferencing, Library, Centrelink Access Point, Medicare, MyGov, Room Hire, Equipment Hire, Workshops, Activities, Events

## Room Hire Prices

**Small Room**  
\$20per hour | \$50per day

**Library**  
\$30per hour | \$60half day | \$100full day

## DISCLAIMER

- 1) No liability shall be incurred by the Gate Post by reason of any amendments to, or error or inaccuracy in or the partial or total omission of an advertisement or by reason of delay or default or from any other cause whatsoever. If in the opinion of the Gate Post the error clearly reduces the value of the advertisement and the advertiser notifies it to the Gate Post within seven days of the publication date, then one correction will be made without charge.
- 2) While the editors normally aim to publish all materials submitted. The Gate Post reserves the right to refuse to publish or republish any contribution or advertisement without giving any reason.
- 3) No articles, letters or advertisements will be accepted which appear to be defamatory or accusatory, or to favour one side in a legal dispute.
- 4) The Gate Post reserves the right to shorten or otherwise amend any contribution other than advertisements.
- 5) The opinions, views & beliefs expressed in articles & other submissions to The Gate Post do not necessarily reflect the opinions, views & beliefs of CRC staff or committee.

## NEWDEGATE & SURROUNDS GREAT SOUTHERN HEARTS THE DRIVE FOR LIVE

It is time again for us to do what we do best and that is to help where it is needed most. Kendall Trucking & Co and friends will be doing a relief run to rural NSW as they are still battling the devastating drought. And as many of us really want to help the chance is here. In close collaboration with Yogi from Kendall Trucking & Co it has been decided to start a donation of dry goods that travels well to help and show them help and care can come from far and wide. Our cut off date we have been given from Yogi will be 20 September 2018. They will leave with the convoy 24 September 2018 and travel to rural NSW with the goods to be delivered to the farmers that is in dire need.

Dry goods include

Dog food  
Chook feed  
Hay  
Any animal feed

For the families

Canned goods  
Boxed goods  
Personal necessities  
Carton of Beer

Anything that would travel well and far without spoiling.

Pitstop Tyre and Mechanical will be our drop off point for the dry goods, they have been kind enough to give us space for the donations.

For hay deliveries we have been kindly given space by the fields days on site. Small bales are to go in the cow shed and there will be a bay in the ram shed for big bales. Ashley McDonald has kindly agreed to leave his telehandler on site for hay deliveries please contact Ashley on 0427 212 023 to sort out the keys.

If you would like to donate cash to the CWA Drought Appeal  
BSB 066 130  
ACC 10414153

For banking comment: "Surname Yogi State for example "Brown Yogi SA"

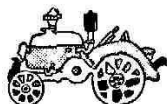
[www.greatsouthernhearts.com.au](http://www.greatsouthernhearts.com.au)

Facebook pages for more information and updates

Kendall trucking & Co  
Newdegate & Surrounds for Great Southern Hearts the drive for life



Thanks to Helen Steicke Newdegate Machinery  
Field Days Sponsorship and Promotions , for this  
weeks cover !





# NOTICE BOARD

## Tip Opening Times

**Wednesday 9am - 1pm**

**Saturday 9am - 1pm**



**Dr Linda Haines' next visiting dates are:**

Tuesday 25th & Wednesday 26th, September  
*and*

Thursday 25th & Friday 26th, October

**Please ring the Lake Grace Medical Centre to book an appointment: 9865 1208**



There will be NO  
Gateway service on  
Sunday, 23rd  
September 2018.

CampFIRE in  
Yealering will be on.

**GNOWANGERUP  
Family Support Association Inc.**



Incorporating Nobarach Occasional Daycare  
& Mobile Child Care Services

## NEWDEGATE OCCASIONAL DAYCARE

Professionally staffed, licensed centre  
providing your children with quality care  
and a safe stimulating curriculum  
based on the new National Quality Framework!

**THURSDAY 9:00AM TO 3:00PM**

**CATERING FOR 0-6 YEAR OLDS**

Please contact the coordinator Katie Sherwood on  
**0427 271 454**

**For Bookings**

Managed by Gnowangerup Family Support Association.  
Bringing licensed, cost effective child care to small towns  
in the Great Southern since 1988.



## **FARMERS**

If you would like double loads of sheep  
and lambs carted to Katanning trade sale  
or WAMMCO

Ring Geoff Galloway

**0428712508**

*Visiting on Wednesdays*



**Quality Seafood delivered  
to your door**

## **WEST COAST SEAFOOD VAN AT THE GAZEBO**

**Next visit:**

**Wednesday 24th October  
3pm - 4pm**

Phone PHILIP on 9821 1141 or  
Mobile 0427 241 204



# NOTICE BOARD



## CRICKET CLUB AGM



**Wednesday 12th September  
in the Dining Room 7pm**

**Past, Present and future players and members welcome**

**HEALTHY & DELICIOUS  
FUNDRAISING**



**PRICE • \$40**

10KG BOX OF FRESH PICKED WA MANGOES

EMAIL US ON JABIRUMANGOES@GMAIL.COM

OR CALL US ON 0407 344 399



## Newdegate Primary School Fundraiser

**10 kg box Mangos**

**\$40**

**Order online at**

**[https://  
form.jotform.co/82410391484859](https://form.jotform.co/82410391484859)or**

**Phone 0407344399**

**Order now for  
Oct/ Dec Delivery**

## Please Slow Down, Consider Our Kids Stickers

We have recently taken delivery of wheelie bin stickers that have the 'Please slow down, consider our kids' message; these were funded by the Lake Grace Roadwise committee and Wheatbelt South Road Safety Officer Rodney Thornton.

They are available for pickup from the Shire and CRC in Lake Grace and also the CRC in Newdegate.

Pop in and get yours!



# Shire of Lake Grace

## Community News



PO Box 50, Lake Grace WA 6353 Ph: (08) 9890 2500 Fax: (08) 9890 2599

Email: shire@lakegrace.wa.gov.au



### CEO's Corner

#### Ongerup Winter Sports Association – Newdegate

Big congratulations to the Newdegate Community who hosted the Grand Finals on Saturday 1 September, there was a huge crowd and the facilities were well presented. A great effort for all involved. Congratulations also to the local teams that came out winners on the day, a great finish to your season.

#### Newdegate Machinery Field Days - 5 & 6 September 2018

The annual Newdegate Machinery Field Days event was held on Wednesday 5 and Thursday 6 September.

The theme of this year's Shire display hosted by our Councillors and Shire staff was centered on our Community Strategic Plan and our Economic, Environment, Social and Leadership Objectives. It was a great opportunity for our community members to get some 'face time' with our Councillors and staff and we certainly enjoyed meeting and interacting with you all.

Although the weather wasn't great (I still can't get over how cold Newdegate can be) it was a fantastic two days. We would like to extend our compliments and thanks to the Newdegate Machinery Field Days Committee and to all of the volunteers for the hard work and effort that goes into making this such an enjoyable and successful event every year.

Thank you also to all of the Shire staff and contractors involved with the town site maintenance and preparation of our facilities, ensuring that Newdegate was well presented to all of our visitors.

#### Art Acquisition Prize... and The Winner is.....

Congratulations to Judy Stewart who is the winner of the 2018 Shire of Lake Grace Art Acquisition Prize. Cr Peter Stoffberg and Cr Roz Lloyd were our Shire representatives and took charge of selecting our winner on Tuesday 04 September. The winning artwork is now on display at the Shire Office.

#### Council

##### Special Council Meeting – Friday 31 August 2018

Items of business considered by Council at this meeting included:

- Supply of Bitumen and Sprayed Bituminous Surfacing – Request for Quotation (RFQ 2018-01)
- Supply of Cement Stabilisation and Wet Mixing Services – Request for Tender (RFT 2018-01)

- Maintenance Grading – Request for Tender (RFT 2018-02)
- Gravel Pushing & Stockpiling – Request for Tender (RFT 2018-03)
- Waste Collection Services – Request for Quotation (RFQ 2018-02)
- Supply and Delivery of Aggregate – Request for Tender (RFT 2018-04)

##### Special Council Meeting – Wednesday 05 September 2018

The item of business considered by Council at this meeting was:

- Supply of Preparation Repairs Prior to Road Sealing Services – Request for Tender (RFT 2018-05)

##### WALGA Central Country Zone Meeting – Friday 31 August 2018

On Friday 31 August, Shire President Cr De Landgraft, Shire Deputy President Cr Hunt and I attended a WALGA Central Country Zone Meeting, hosted by the Shire of Wickpin. The items of business considered at this meeting included:

- Policy for Restricted Access Vehicles on Roads Not on an Approved Network during Harvest
- Local Government Act Review Phase 2
- Road Safety Audit Requirement for Black Spot Submissions
- Australian Local Government Association Election Initiative Summary
- Department of Water and Environmental Regulation Discussion Paper on a Cost Recovery Approach
- Election Caretaker Period
- Approval Conditions for Roads on the RAV and AMMS Networks

#### Road Works

The Construction Crew and General Maintenance Staff have carried out the following work:

- Lake Grace Tip – tip clean up
- Slarke Road - carting of culverts and plant, cleaning of Slarke Road Pit, back slopes, tree removal, grading and rolling
- Newdegate Recreation Ground Maintenance – tank pad
- Rural Road Signs and Guideposts

*Continued over ..*

## Shire of Lake Grace Community News *Cont.*

### CEO Corner *Cont.*

- Biddy Camm Road – cleaning of back slopes
- Carting of gravel to Slarke Street

The Lake Grace Maintenance Grader has carried out grading work on the following roads:

- Biddy-Camm Road
- Slarke Road

Road inspections have also been carried out on the following roads:

- Burns Road
- Green Road

The Newdegate Maintenance Grader has carried out grading work on Shalders Road

### Parks and Gardens

The Town Maintenance Crew have carried out the following work:

- Lake Grace Swimming Pool – tree branch removal, mowing and blowing
- 3 Clark Avenue, Lake Grace – final clean of yard, mowing of lawns and general garden maintenance
- Town Street Maintenance – tree branch removal, general tidying up of town, mowing, whipper snipping, spraying of laneways and verges and slashing of Stubbs Street verges
- Lake Grace Recreation Ground – whipper snipping, mowing of hockey oval, removal of fallen tree branches from around the ovals and moving of blue metal
- Lake Grace Playgrounds – removal of playground at Morrison Avenue
- Lake Grace RSL Hall Garden – mulching at the back of the Hall
- Lake Grace Railway Building – general garden maintenance and weeding
- Varley Pavilion – general garden maintenance
- Varley Townsite – spraying

- Newdegate Field Days – clean and drop off bins and bin collection

### Building & Maintenance

The Building and Maintenance Team have carried out the following work:

- 6 Banksia Place, Lake Grace – kitchen upgrade
- Lake Grace Swimming Pool – preparation for drainage works, including removal of carpets and paving
- Newdegate Pavilion – maintenance and inspection ahead of Field Day event
- 3 Clarke Avenue, Lake Grace – air conditioner fault and maintenance to tile fire
- Lake Grace Public Toilets – water leak
- Lake Grace AIM – continuation of building movement monitoring

*Denise Gobbart*  
Chief Executive Officer

## Pension and Senior Card Advice

Under the Rates and Charges (Rebates and Deferments) Act 1992, the Local Governments are required to periodically review all pensioners.

If any of the details checked do not match, the claim may be rejected and concessions may be amended or cancelled.

Therefore, some things that pensioners and seniors may need to consider and advise the Shire about are:

- Do I hold a Commonwealth Seniors Health Card as well as a Seniors Card and am I only registered at the Shire with my Seniors Card?
- Has my partner also now received a card and we have not completed a joint application yet?
- As I am now not working more than 25 hours per week and am over 60, have I applied for a Seniors Card yet?
- Has the ownership of my property changed recently?
- Have I moved from one property to another and not made a new application for concessions with Water Corporation yet?
- Has my spouse ceased occupation of the property and I have not completed a new application?

If you work more than 25 hours per week, you are no longer eligible to have the Seniors Card and must return the card to Department of Community Services with a note advising them of your situation.

Unfortunately if concessions are cancelled, pensioners/seniors do not get their rebates again until new applications are made.

## Ordinary Council Meeting

The next Ordinary Council Meeting will be held:

**Date: Wednesday 26 September 2018**

**Time: 3:00 pm**

**Location: Council Chambers**

**1 Bishop St Lake Grace**

## *Members of the public welcome*

A minimum of 15 minutes is set aside for public questions time, giving members of the public an opportunity to ask questions relating to Shire activities.



## Shire of Lake Grace Community News *Cont.*

### Office Opening Hours

Monday - Tuesday - Wednesday - Friday

8.30am - 4.30pm

Thursday 8.30am- 4.00pm

Staff can be contacted by phone between 8am - 5pm.

### Transport & Licensing

All licensing payments are to be made in person at the Shire of Lake Grace Administration building.

**Monday, Tuesday and Wednesday 8.30am - 4.15pm**

**Thursday and Friday 8.30am - 4.00pm**

As an agency we process the majority of transactions, including; renewals, transfers, number plate orders, boat registration renewals and new licence applications.

Please ensure you arrive at the counter with sufficient time for your transaction to be completed by closing time, this is because it is necessary for staff to reconcile Department of Transport transactions each day.

Please keep in mind that farm equipment and Learners Permit transactions can take up to 45 minutes or more.

### Driving Assessor

The Practical Driving Assessor (PDA) will be at the Shire of Lake Grace Office on:

**Friday - 5 October 2018**

**Friday - 2 November to be confirmed**

Bookings are essential for all Practical Driver's Licence Assessments and we advise that there is a waiting list, so booking in advance is highly recommended.

Lake Grace has one assessment day each month held on the first Friday of the month.

For more information visit [www.transport.wa.gov.au](http://www.transport.wa.gov.au).

### Building Surveyor

Shire Building Surveyor, Josiah Farrell will be available at the Shire Office on the following dates:

**Tuesday 18 September 2018**

**Tuesday 2 October 2018**

For an appointment contact Josiah on 0438 811 944.

### Environmental Health Officer

For an appointment with the Shire's Environmental Health Officer, Will Pearce, please contact the Shire on 9890 2500 or email [shire@lakegrace.wa.gov.au](mailto:shire@lakegrace.wa.gov.au).

### Tip Open Hours

#### Lake Grace

Monday & Wednesday 9am - 2pm

Saturday & Sunday 9am - 4pm

#### Newdegate

Wednesday 9am - 1pm

Saturday 9am - 1pm

#### Lake King & Varley

Open Every Day

### Waste & Recycle Pickup

Household Waste Collection is a weekly service and collected each Monday for Lake Grace, Newdegate, Lake King & Varley.

**Recycling** is a fortnightly service and alternates between Lake Grace & Newdegate. See below for the upcoming recycling collection dates.

Lake Grace	Newdegate
17 September	24 September
1 October	8 October

**Please Note:** There is no kerbside recycling collection service in Lake King or Varley.

For more information on Waste Management visit the Shire's website.

### Office Opening Hours

#### Lake Grace Public Library School Place Absolon St

Monday - Thursday 9am - 5pm

Closed for lunch 12.30 - 1pm

#### School Holidays

Tuesday & Thursday 9am - 5pm Lunch 12.30 - 1pm

#### Newdegate Public Library Collier St

Monday - Thursday 8.30am - 4.30pm

Closed for lunch 12noon - 1pm

Friday 9am - 2pm

#### Lake King Library Newdegate/Ravensthorpe Rd

Tuesday and Thursday 8.30am - 3.30pm

*Everyone welcome*



Check out our Facebook page [www.facebook.com/ShireofLakeGrace](https://www.facebook.com/ShireofLakeGrace)

## Shire of Lake Grace Community News *Cont.*



### VACSWIM Enrolments

VacSwim classes in Newdegate and Lake Grace will be held from:

Saturday 15 December 2018  
until Friday 21 December 2018

Your children can join in the fun of learning to swim for just:

- \$7.00 per child for a five day short program
- \$13.00 per child for all other programs.

It's even cheaper if you have three or more children:

- \$18.00 a family for a five day short program
- \$35.00 a family for all other programs.

The family enrolment discount only applies to three or more immediate family members or a blended family living permanently at the same address (proof may be requested).

Separate entry fees may be required at pool centres for participants and accompanying family members.

**Enrolments Close:** Sunday 4 November 2018

### Community Citizen of the Year Awards

**The campaign for Community Citizen of the Year Awards 2019 will officially open on 1 September.**

#### There are four categories Citizen of the Year

A person you believe has delivered outstanding service to his or her community.

#### Citizen of the Year – Youth.

A young person you believe has delivered outstanding service to his or her community. To be eligible, the person must be under 25 years of age on January 26, 2018.

#### Citizen of the Year – Senior

An older person you believe has delivered outstanding service to his or her community. To be eligible, the person must be over 65 years of age on January 26, 2018.

#### Award for Active Citizenship

A group doing outstanding work or for an event staged in the community during the past year.

**NOMINATIONS OPEN 1 September 2018  
CLOSE 31 October 2018**



### Hirer Responsibility when using Shire Public Buildings

All people, groups, sporting clubs who hire public buildings are responsible for the cleaning of the facility once used.

If tables and chairs are set up by the group they must also be packed away. All rubbish is to be put into bins provided. Hirers are responsible to ensure all stoves are turned off. Hirers are responsible for any damages incurred while hiring facility.

Shire employed cleaners are responsible for the general cleaning of a facility, they are not responsible for cleaning up and putting away tables and chairs after a function by a hirer.

Affiliation fees are set up to help cover some of the costs in maintaining the buildings for the hirers use which includes but not limited to; general cleaning, water and electricity usage.

### Cat Trap Hire

If you are being kept awake at night by singing cats or ones that are fighting please be aware that the Shire has a cat trap available for hire, \$50 bond which will be returned to you upon the return of the cat trap.

### State Library Online

Did you know that library members have access to a state-wide collection of eBooks, eAudio, eMagazines and video streaming, all for free?

By signing in with their library card, members can enjoy BorrowBox and OverDrive for a wide selection of bestselling eAudiobooks and eBooks, while RB Digital offers current and back issues of popular eMagazines. Kanopy delivers one of the largest collections of indie films, classic cinema, festival and educational documentaries right to your device or compatible TV!

Please visit the Shire website in the library tag at [www.lakegrace.wa.gov.au](http://www.lakegrace.wa.gov.au) for more details on how to access and enjoy these free resources.

### Power Outages

Customers affected by power outages lasting 12 continuous hours or more, may be eligible for an \$80 service standard payment.

To find out if you are eligible go to: <https://westernpower.com.au/power-outages/make-a-claim/>



Check out our website [www.lakegrace.wa.gov.au](http://www.lakegrace.wa.gov.au)

## Enjoy the view but stay out of flowering canola

Travellers heading beyond the city limits to enjoy the splendour of spring in the countryside have been reminded not to enter farmers' properties and risk a biosecurity incident. Department of Primary Industries and Regional Development grains biosecurity officer Jeff Russell said while good rains had boosted crops this year, it also heightened the risk of plant pests and diseases. Mr Russell said visitors could unknowingly spread pests, weeds or diseases, which could risk farmers' livelihoods.

"Tourists and day trippers looking at crops such as flowering canola could easily spread weed seeds and soil material that may contain a fungal disease on their footwear or vehicles to other properties, which could devastate crops," he said. "Visitors are welcome to admire crops and take photographs from the road verge but it is illegal and far too great a biosecurity risk to jump the fence."

Mr Russell said tourists were most welcome in the regions and could assist the department's pest and

disease surveillance efforts. "Visitors can assist farmers and the department by monitoring road verges for pests and diseases," he said. "Download the free MyPestGuide™ Reporter app, take a photograph of any insects or plant diseases on the road verge and send it to the department and we'll send you back a diagnosis and determination of whether it is a risk to crops."

Mr Russell said the public's support of the State's biosecurity defences was appreciated in protecting Western Australia's enviable reputation, which is imperative for market access. "Good biosecurity is a partnership between government, industry and the community and the public plays a key role in the first line of defence," he said. "Assisting roadside monitoring is a great way for the public to help our farmers, however, please be careful where you park your vehicle so that you don't become a traffic hazard."

*Media Release*

[www.agric.wa.gov.au](http://www.agric.wa.gov.au)

## lake grace engineering

### \* Hydraulic Hose Crimping & Fittings

### \* Qualified Machinist for Lathe & mill work including Hydraulic Cylinder repairs

\*General Steel Repairs & Fabrication

\*Stainless Steel Fabrication

\*Insurance Work

\*Aluminium Fabrication including boat repairs, boat trailers, canopies & toolboxes

\*Sandblasting & Spray Painting

\*Transport Equipment Fabrication & Repairs

\*New Agricultural Machinery (Seed/Super Bins , Augers & Comb Trailers etc)

Ph: (08) 98 651 845 / Fax: (08) 98 651 846

Email: [adminlge@bigpond.com](mailto:adminlge@bigpond.com)





# LAKE GRACE HEALTH SERVICE



providing 24 hour Emergency Health Care Services

Telephone: 9890 2222 Fax: 9890 2202

## Health and Activity Programs (Hospital, HACC and CHSP)



### Chair Aerobics

Every Tuesday

10.30am

Lakes Village Hall

(suitable for people with limited mobility)

FYI—Extended Care Nurse also attends most weeks



### 4th Friday Activity Day

Friday 28th September

10.00am—1.30pm

Lakes Village Hall

Activities, games, trivia

For catering please ensure you

RSVP by 25th September



## Child Health Clinic



For all child health or immunisation enquiries please call Di Poultney at the Lake Grace Clinic

Allied health staff make visits to Lake Grace and Newdegate (ie Physiotherapist, Occupational Therapist, Speech Therapist, Dietitian)

**Physiotherapist—18th September**

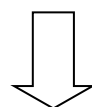
**Dietitian—18th September**

If you would like to provide feedback on your health service experience we have **feedback forms** in the foyer that can be completed. Alternatively you can use the Patient Opinion website

**[www.patientopinion.org.au](http://www.patientopinion.org.au)**

All feedback is important, so we can strive to provide the best care experience possible for

all our clients.



**PATIENT  
OPINION**  
AUST  
BE HEARD.

Home

Tell your story

About us

Search

Search for stories about...

eg Royal Brisbane Hospital, heart surgery, depression, 2250

We believe that patients' feedback - **good or bad** - is essential to improving Australian health services.

Tell us what was good and what could be improved, say thanks or call for change - we'll pass your stories to the people in the health services who can make a difference.

▶ Tell your story - Make a difference

## Patient Opinion in 2 minutes



# WA Pasture and Livestock Update

## Lake Grace

### Wednesday 19 September 2018

**Starting at Royce Taylor's farm (17km south of Lake Grace),  
then the Lake Grace Sports Pavilion for lunch and the afternoon session**

The day will start in Royce's paddocks to inspect a range of medic pastures, saltland pastures and a 2014 sown paddock scale trial comprising a large range of annual legume pastures managed in a 1:1 crop:pasture rotation. He will be joined by Chris Poole from ALOSCA (nitrogen fixation in legumes), Angelo Loi from DPIRD (annual legume pastures) and Steve Carr from AgLime (soil pH and pastures). After the farm tour, we will drive to Lake Grace for lunch and the afternoon session.

Speaker	Afternoon topics
Ed Riggall : AgPro Management	Managing for high sheep profits in good & bad years. Chaff carts and sheep
John Young : Farming Systems Analysis Service	Merino Wethers – Prime Lamb, Hogget or Mutton?
Phil Nichols : DPIRD	New varieties of sub clover. Messina for wet and saline soils
Paul Sanford : DPIRD	Red Leaf Clover Syndrome update
Stuart Nagel : SARDI	Growing vetches
Anna-Lisa Newman: Varley Producer	Large scale adoption of serradella
Angelo Loi : DPIRD	Reducing crop fertiliser nitrogen with legume pastures
David Clegg : SeedNet	Tedera – an exciting new perennial legume
TBA	Confinement feeding for better pastures, crops and stock
Sarah Blumer : Murdoch University	Breeding resilient sheep. Boosting lamb survival.
Tim Watts : WALRC	Research and extension priorities for pastures and livestock
John Paul Collins : DPIRD	Livestock technology that saves time & makes money
Drinks	Courtesy of ALOSCA

**Time:** 9.45am for a 10.00 am start. 5.00pm finish.

**Cost:** \$30 (cash or cheque on the day. No credit card facility available)

**RSVP:** Phil Barrett-Lennard, 0429 977 042, phil@agvivo.com.au

## 2018 Bloom Festival

There are so many fantastic things to share across the width and breadth of the Great Southern of Western Australia. The 2018 Bloom Festival, presented by Act-Belong-Commit, is the opportunity for us to put the spring spotlight on the northern parts of our region.

Hidden Treasures of the Great Southern showcases all those smaller places that thrive on the commitment and inspiration of the communities that choose to live, work and play there. Experience this celebration of country life that is the Bloom Festival, join us at some (or all if you have the stamina) of the 82 events that are being held across the Great Southern region.

We appreciate and acknowledge the support from our eight local governments, regional organisations, local community, government and corporate sponsors. In particular, thanks to the Great Southern Development Commission, Tourism WA, Healthway, Lotterywest and the Road Safety Commission, the Commonwealth RDA

Great Southern, as well as our other sponsors CBH and Southern Ports and the many regional small businesses contributing to the success of the festival.

Helping us spread the word are the Great Southern Weekender, GWN7 and Triple M. Keep your eyes open for our social media posts.

We also would like to thank the many volunteers, local community and small business partners. If you enjoyed our hospitality last year please share that with your friends and encourage them to hit the roads and tracks with you, as you again join us. Let us share our patch of paradise with you, a truly Great Southern experience engineered by man and nature, and we know you'll have a blooming good time.

*Vicki Brown Chairperson*

Come into the CRC to pick up your 2018 Bloom Festival Program.



# Newdegate IGA X-press

Providing a Selection of Grocery Lines & Quality Gifts.

### Special Orders:

Email: [kenboyes59@gmail.com](mailto:kenboyes59@gmail.com)

Heather Edinger: 0407048625

Ken Boyes: 0488099052

Fax: 9871- 1757

Ph: 9871- 1618

### Normal Opening Hours:

Monday-Friday: 8:00am-5:30pm

Saturday: 8:00am-2:00pm

Sunday: Closed





## Kids Sports Windup

The kids winter sports wind up was held at the sports pavilion on Tuesday 28th August. It's great to see all the up and coming sports talent we have in our community.

It was the last junior wind-up for most of our year 6 & 7's and also an opportunity to thank the parents who took up coaching roles this year, without whom, none of this would be possible.

The Newdegate Junior Football Club Awards

Winners were:

Fyfe Award: Sorren Humphries

Runner Up F & B: Koby Hams

Fairest & Best: Meikhi Humphries

Coaches award: Madison Steicke



ABOVE: Jr Hockey Coach Davina Hams with the leaving year 6's



ABOVE: Junior Football Club Award Winners.



Emily Bain, Meikhi Humphries, Daniel Barrett-Lenard, Joshua Grahame, Laura Ness year 6 & 7's

STUBBY'S ELECTRICAL PTY LTD T/AS

# OUTBACK

LIC NO EC 004197



For all your domestic, rural and industrial electrical installations and repairs.

Split system air conditioning installation and decommissioning.

Large range of Australian brand LED floodlights, downlights, hibays and fluorescent replacements.

Ditchwitch hire and cable location.

With over thirty years experience in Lake Grace and surrounding areas contact Stubby or Reid anytime.

**Stubby 0429651092 or Reid 0429651069**

**Office 98651092 all hours Fax 98651328**

## Kids Sports Windup



ABOVE: The line for the Ice Creams, always the most exciting part of the night.



ABOVE: Sarah Lloyd thanks Coach Kelly Richardson who brought Minkey to the town this year.

ABOVE: Hayden Richardson with this years Aus Kick team.

# FYFE TRANSPORT NEWDEGATE

## FOR YOUR TRANSPORT REQUIREMENTS

- **LIVESTOCK**
- **FERTILIZER**  
**(Bulk or Liquid)**
- **LIME-GYPSUM**
- **BLUE METAL**



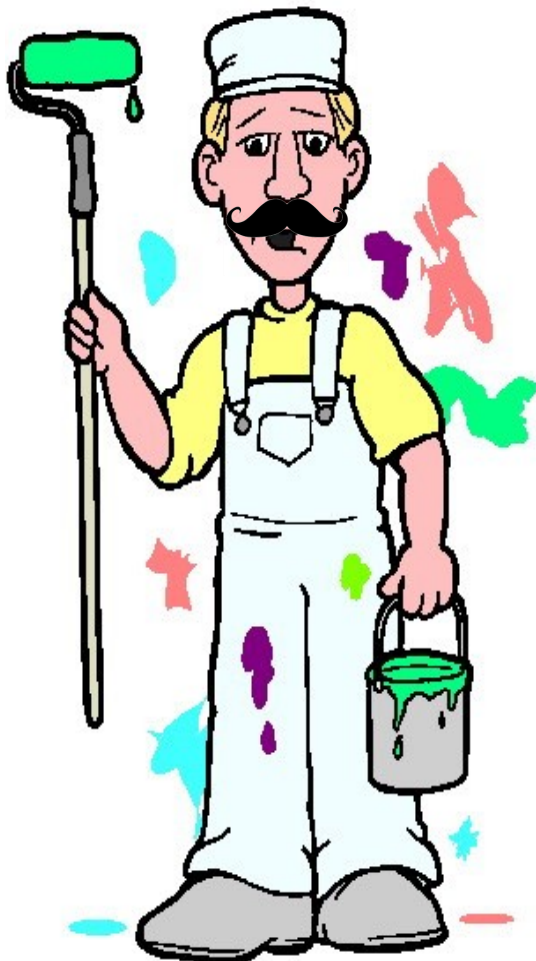
**PHONE - AARON  
DAVID**

**0417991684  
9865 1129**



## **O'Shannessy Shearing W.A**

**Professional, Reliable, Local Team**  
**Newdegate & Surrounding Areas**  
*0448980932 (Wade)*



## PAINTING

Reg. # 4709

Domestic, Commercial, Industrial, Farm &

Heritage Specialty.

Clean, Precise and

Quality work.

Local references

available.

For FREE Quotation and

Booking Call Mick

0419 701 332





## KEETLEN VALLEY POLL MERINO STUD



Keith & Helen and family warmly welcome you to our  
*19<sup>th</sup> Annual*

## **On Property Sale Friday 21<sup>st</sup> September 2018**

Inspection from 10.00 am  
Sale Commences 1.30 pm

See us at  
Newdegate Machinery Field Days  
Site 45D  
Wednesday 5<sup>th</sup> & Thursday 6<sup>th</sup>  
September 2018



K.J. & H.D. Hams  
PO Box 35 Newdegate WA 6355

Ph: 9872 0057  
Mob: 0427 720061

# What's happening at the



## Pingrup CRC

- Writing Workshop with Michelle Slarke – Thursday, Sept 13th, 9.30 am - 11.30 am
- Truck Courses - Week commencing 17th Sept
- Paint Pouring Workshop with Boom Gel Stain – Sun, Oct 14, 10:30 am – 12:30 pm
- Bloom Festival closing event “Bye Bye Bloomin’ Goodbye” - Sat, Oct 20th, 2018 (market stalls, family entertainment, Silo art)

Barista Course – Oct 23<sup>rd</sup> & 24<sup>th</sup>, 9 am – 3 pm

If you are interested in any of the above please phone the Pingrup CRC on 9820 1101.



## Lake Grace CRC...

**safeTALK** - Thursday 20th September. Free. For more information please contact as per below.

**Crochet Classes** - Every Friday, 10am to midday. Everyone welcome. Will run every Friday until late September.

There will be NO crochet Friday 28th

**Independent Information on NBN.** FREE. September 17th.

**ASIST** - Lake Grace 16th & 17th October. Free. For more information please contact as per below.

**HC/MC Training & Assessment** - March/April 2019. Costs TBA.

**Forklift Training & Assessment** - March/April 2019. Costs TBA.

If you are interested in any of the above please phone the Lake Grace Community Resource Centre on 9865 1470 or email [lakegracecrc@westnet.com.au](mailto:lakegracecrc@westnet.com.au)

# What’s happening at the



## AGRIMASTER COURSE

Thursday 11th October  
11am (includes a light lunch)  
Newdegate CRC

\$20pp

FOR MORE INFORMATION OR TO BOOK YOUR SPOT CALL HOPE  
ON 9871 1791 OR EMAIL [NEWDEGATECRC@WESTNET.COM.AU](mailto:NEWDEGATECRC@WESTNET.COM.AU)



Exercise Class held by  
Karen Rodgers-Smart

Thursday 13th  
&  
Thursday 20th  
9:00am for a 9:15 start



## AN AFTERNOON WITH *Sabrina Hahn*



**\$100PP**  
To be paid in advance

**OCTOBER 8**  
Newdegate CRC

**1:00PM**  
Come on time!

To register contact Hope: 9871 1791 | [newdegatecrc@westnet.com.au](mailto:newdegatecrc@westnet.com.au)

Questions to be submitted in advance.  
Sick/dying plant samples welcome as long as they are in a container.  
Limited individual private consultations are available at an additional cost.



## Are you interested in the biosecurity of Western Australia's agricultural industries?

Western Australian producers and other stakeholders in the dairy, beef, grain/seed, hay, sheep and/or goat industries and respective supply chains are invited to apply for positions on Industry Funding Scheme management committees.

Industry Funding Schemes enable agricultural industries to raise funds to address priority pests and diseases at a whole-of-industry level.

The schemes are industry-driven and overseen by a management committee made up of producers and other stakeholders with appropriate industry knowledge and expertise.

Members of the committees are appointed by the Minister for Agriculture and Food. Support is provided to the schemes and management committees by the Department of Primary Industries and Regional Development.

There are vacancies on the following management committees:

- Cattle Industry Funding Scheme (1 position)
- Grains, Seeds and Hay Industry Funding Scheme (3 positions)
- Sheep and Goat Industry Funding Scheme (2 positions)

Committees meet quarterly on dates agreed by members, and members are remunerated, including sitting fees and travel expenses.

The committee terms of reference, the selection criteria for members of the Industry Management Committees, and guidelines for committee member nominations are available on the Department of Primary Industries and Regional Development website at [agric.wa.gov.au](http://agric.wa.gov.au). Search for 'Industry Management Committee terms'.

The Western Australian Government is committed to ensuring diversity on Government boards and committees, and in particular, increasing the representation of women to 50 per cent by 2019. Expressions of Interest should consist of a two page letter addressing the selection criteria in addition to a current resume of a maximum of two pages.

Submit your Expression of Interest for one or more of the management committees to Rebecca Heath by **5.00 pm Thursday 27 September 2018**.

### Contact

Rebecca Heath  
Department of Primary Industries and Regional Development  
+61 (0)8 9690 2171  
[rebecca.heath@dpiird.wa.gov.au](mailto:rebecca.heath@dpiird.wa.gov.au)



**119 Federal St Narrogin 6312**

**9843 2186**

[www.narroginultrasound.com.au](http://www.narroginultrasound.com.au)

Email: [info@narroginultrasound.com.au](mailto:info@narroginultrasound.com.au)

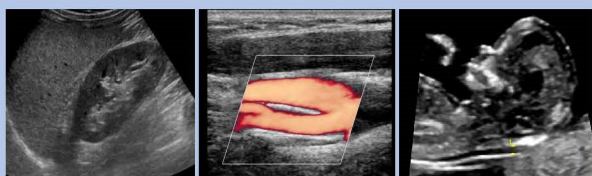
fb: Narrogin Ultrasound

- ❖ NO WAITING LIST
- ❖ ALL REFERRALS ACCEPTED
- ❖ FLEXIBLE OPENING HOURS

**BULK BILLING FOR PENSIONERS, HEALTH CARE CARD HOLDERS AND CHILDREN**

**WE PERFORM ALL TYPES OF ULTRASOUNDS INCLUDING:**

General, Vascular, Musculoskeletal, Small Parts, Paediatrics, Gynaecology, Obstetrics and 3D/4D



ALL ULTRASOUNDS PERFORMED IN A CONFIDENTIAL, CARING ENVIRONMENT BY EXPERT ACCREDITED SONOGRAPHERS



Department of  
Primary Industries and  
Regional Development

Need wool shifted off farm contact

## Lake Grace Transport

Twice weekly freight service to and from Perth, more often in busy periods.

- > Secure depot in Perth for freight
- > Wool and general freight service
- > Forklift for on farm wool loading
- > Delivery to all wool stores
- > Midland brick accreditation
- > Dangerous goods licensed driver
- > Pickup service in Perth available



Friendly operator and drivers living and working locally

Carting wool and general freight for over ten years

Contact: Rex 0429649021 or Darren 0428651339

*Ordering early offers you surety of supply, giving peace of mind*

**Summit Fertilizers Early Order Offer  
is open**

**All the security of early ordering  
and  
everything SummitQ services can offer you**



**Call Mark Stephens**  
0427 766 517

Dumbleyung  
Kent  
Lake Grace  
Wagin

Call me to talk about your  
requirements for 2019.



**VIGOUR**

**MAXam  
FLO**

**SUMMIT  
FERTILIZERS**



For all your earthmoving needs.  
No matter how big or small.

Also doing Bulk Grain, Gypsum, Dolomite and Water.

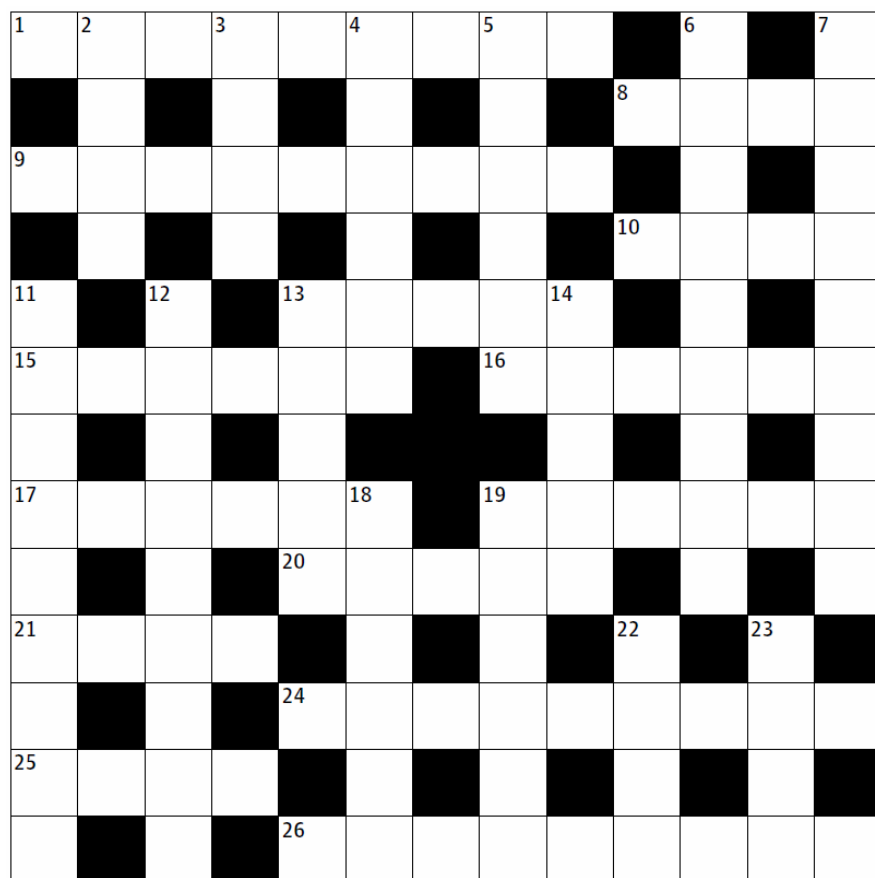
Plant Available:

- Graders
- Loaders
- Backhoe
- Side Tippers
- End Tippers
- Water Tankers
  - Float
  - Rollers
- 1tonne Excavator
- Kanga Loader & attachments
  - Trencher
- Post Hole Digger (300ml)
  - Cement Mixer
  - Offset Blade
  - 4/1 Bucket
  - Rock Bucket
  - Scrub Bucket
  - Land Leveller

**For more information contact Brad Kennedy**  
**Mobile: 0428-199-244**  
**Email: [newdegategrading@gmail.com](mailto:newdegategrading@gmail.com)**



# Puzzle Page



## Across

- 1** Weakened – depressed (2,1,3,3)  
**8** Moon about (4)  
**9** Money to be used for financing corruption (5,4)  
**10** Entrance (4)  
**13** Lone Star State (5)  
**15** Hold back – trader (anag) (6)  
**16** Drive insane (6)  
**17** Causing death (6)  
**19** In short supply (6)  
**20** Of imposing height (5)  
**21** Throw (4)  
**24** Pointed out (9)  
**25** Trigonometrical function (4)  
**26** Star of Singin' in the Rain (1952) (4,5)

## Down

- 2** Work the land for cultivation (4)  
**3** Stroke of a whip (4)  
**4** Passed gently through the air (6)  
**5** Small fowl (6)  
**6** Odd owners (anag) – achieve great things (2,7)  
**7** Pocket pistol (9)  
**11** Playwright (9)  
**12** Right now (2,7)  
**13** Suffering – litigation (5)  
**14** Pert (5)  
**18** Sitting room (6)  
**19** Make every effort (6)  
**22** Cook in an oven (4)  
**23** Loud ringing of bells (4)

## Last Editions Solution...

1	C	A	2	T	E	3	G	O	4	R	I	5	C	A	6	L	L	7	Y
	E			O			A			U			H			I			I
8	R	U	N				9	G	U	I	N	E	V	E	R	E			
	E		G				S			N			W			C			L
10	S	Q	U	A	T	T	E	R					11	S	H	E	D		
			E				E			D			12	B		T			E
13	P	L	I	E	R	S				14	D	O	G	E	N	D			
	A		N			S				15	S		N			N			
16	S	O	C	K						17	R	E	V	E	R	S	E	18	S
	S		H			19	L			A			M			T			E
20	O	B	E	D	I	E	N	C	E						21	E	R	R	
	U		E			L			C				A			I			V
22	T	A	K	E	T	H	E	P	L	U	N	G	E						

## Easy

9			1			8		
	3	1		8	4		5	
2	4			7	5		3	
				5	6	3		4
5		6	2	4				
	9		5	6			7	3
	1		3	2		6	9	
		3			7			1

## Medium

4	3	5	9	7	2	1	8	6
6	8	9	4	1	5	2	3	7
1	7	2	3	8	6	4	5	9
8	2	3	5	6	1	7	9	4
9	5	6	7	2	4	8	1	3
7	4	1	8	9	3	6	2	5
3	9	8	2	4	7	5	6	1
5	1	4	6	3	8	9	7	2
2	6	7	1	5	9	3	4	8



**Your Fertiliser Dollar Buys More at Whitfert**

Proven fertiliser that doesn't cost the earth.....

.....that's Whitfert

CALL 1800 654 089

[www.whitfert.com.au](http://www.whitfert.com.au)

Phil Brooks

0428 282 726

Ken Ashworth

0418 931 469

Keith Ballard

0429 793 506

CUSTOM STEEL FABRICATION AND CONSTRUCTION



CONSTRUCTION  
**DUNKELD**

[www.dunkeldconstruction.com.au](http://www.dunkeldconstruction.com.au)

Steel Fabrication :: Construction :: Shed Building :: Site Welding  
Concrete Tilt Panels :: Rural Building :: Commercial and Industrial Building

16 Merrifield Street Albany

CUSTOM SHEDS  
BIG AND SMALL

P: 08 9841 1336

Builders Reg 13558

## KUKERIN SHADE SHEDS



- Shade sheds for vehicles, caravans, boats etc.
- Shade stables for horses
- Dangerous goods storage sheds
- Chemical sheds
- Quickshade and Canvacon products

[www.shadesheds.com.au](http://www.shadesheds.com.au)

Contact Damion & Susi Leo on  
0427 646 043 for more information.



## Contacts

Justices of the Peace	
Mr Colin Connolly	9865 1010
Mr Ron Dewson	9865 1224
Mr Geoff Sabourne	9865 1171
Mrs Amanda Milton	0429 654 011
Mr Colin Dunkeld	98711 556
Mrs Rosy Sinclair	9874 7045
Mr Ian Chamberlain	98716 001

Services	
Emergency Services	000
LG Police Dpt.	9890 2000
Ravy	98381004
Poisons Info.	13 11 26
Health Direct (24hr)	1800 022 222
Western Power	13 13 51
Water Corp	13 13 75

Lake Grace Shire Councillors		
Councillor	Telephone	Fax
Jeanette De Landgraft ( <i>President</i> )	9872 0029 / 0429389062	(08) 9838 9041
Steve Hunt ( <i>Deputy President</i> )	9865 1650 / 0427651585	
Roz Lloyd	9871 1534 / 0428711534	(08) 9871 1676
Allan Marshall	9865 3022 / 0427943291	(08) 9865 3012
Murray Stanton	9865 1329 / 0429900870	(08) 98651223
Mikaela Spurr	0438 926 196	
Ross Chappell	9865 4058 / 0428654058	(08) 9865 4051
Deborah Clarke	9865 4041 / 0428654041	(08) 98654032
Peter Stoffberg	9865 2550 / 0447 281 181	

Local Services	
<b>Lake Grace Medical Centre</b>	<b>9865 1208</b>
Monday/Tuesday/Thursday/Friday 9:00am - 12:30pm closed for lunch 2:00pm - 5:00pm	
<b>Newdegate Medical Centre</b>	<b>9871 1528</b>
Wednesday, 9:30am - 3:30pm	
<b>Dentist (Dr Bryan Flemming)</b>	<b>9865 1028</b>
Tuesdays weekly during summer. Tuesdays/Wednesdays fortnightly during winter	
<b>Physiotherapist (Karen Rodgers-Smart)</b>	<b>0439 858 587</b>
<b>Child Health Nurse (Di Poultney)</b>	<b>9890 2246</b>

**Newdegate 2018 Phone Books available at the CRC for \$7**





Bayer CropScience Pty Ltd  
ABN 87 000 226 022  
Level 1, 8 Redfern Road  
Hawthorn East Vic 3123  
Australia  
Tel. +61 3 9248 6888  
[crop.bayer.com.au](http://crop.bayer.com.au)

## News Release

### \$500 donation for Newdegate School Camp

**Australia, September 2018** – Pupils and teachers at Newdegate Primary School have welcomed a \$500 donation to the School Camp from the Crop Science division of Bayer and Newdegate Stock & Trading Co. through the iGiveLocal Community Support Program. Now in its third year, the iGiveLocal Program has to date donated over \$100,000 to 190 local causes around the country.

The cheque was proudly presented to school representative Amanda Shalders by Mitchell Tuffley from Bayer and Colin Dunkeld from Newdegate Stock & Trading. Colin said “The school camp is a great experience for the children as it gives them a wider field to visit different places. We’re pleased to be able to support the school camp through the iGiveLocal Program.”



**Photo (L to R):** Colin Dunkeld, Mitchell Tuffley, Amanda Shalders, Jesse Wynne Maddison Steicke and Laura Ness.



## UPDATES FOR SKELETON WEED PROGRAM

The Annual General Meeting will be held in Kulin on Wednesday the 17<sup>th</sup> of October 2018, commencing at 4.00pm. Venue to be confirmed at a later date.

The Grains, Seeds and Hay Industry Funding Scheme Committee has endorsed the funding to pay for searching by Contractors/Landholders this coming season 2018/2019 of CODE 3 paddocks to try to clear some of these infested paddocks from the program.

Please check your emails for Membership Forms (Free) for LAKES LOCAL ACTION GROUP, stay invested in your Industry.

**Any queries or REPORTS to LAKES LOCAL ACTION GROUP,**

**COORDINATOR LYN CARRUTHERS**

**08 9865 2816 or 0455 112 476**

### GUT HEALTH AND FERMENTATION WORKSHOP



Tracy will discuss what constitutes normal, healthy digestion and how good gut health and a balanced microbiome are vital for your overall physical and emotional health & wellbeing. You'll walk away armed with knowledge on what dietary and lifestyle factors negatively and positively influence your gut health and how you can begin to improve and repair your digestion and rebalance your gut flora.

We will then cover how to make your own fermented foods and drinks with;

1. Lacto-fermented carrots and cauliflower, beet kvass, including a hands-on session making your own sauerkraut to take home, plus samples of each to taste.
2. How to brew your own fizzy, delicious kombucha with each participant receiving a kombucha starter and SCOBY to take home and samples to taste.

**WHERE:** Newdegate Community Resource Centre

**WHEN:** Thursday 18th October

**TIME:** 9.30am to 2pm

**COST:** \$100 per person. Includes all ingredients, jars and a printed Fermenting booklet with all the recipes and more. Lunch and cuppas kindly provided by the Newdegate Community Resource Centre.  
Minimum number: 10 participants  
Contact the NCRC on **9871 1791** to register

**PAYMENT:** Direct Deposit: Green Tree Naturopathy BSB: 066 504 A/C: 10131171 (commonwealth bank) ref: SURNAME & NDGATE

Payment must be made prior to the day to ensure enough cabbages, jars and Kombucha kits are supplied and fermented food samples are available



Tracy is a Naturopath with over 20 years experience in natural health and medicine. She runs regular fermenting workshops and her clinic has a strong focus & success in improving the gut function and microbiome health in her clients.



# Community Calendar

## September

- Wed 12th** Awareness through Movement 3:30pm-4:30pm, NGT Town Hall  
Cricket Club AGM, Dining Room 7pm
- Thu 13th** Movesmart Pilates, 9am @ The CRC
- Fri 14th** Interschool Athletics at Lake King
- Sat 15th** Winter Sports Windup, 6pm @ The Sports Pavilion
- Sun 16th** Newdegate Golf Championships
- Thu 20th** Movesmart Pilates, 9am @ The CRC  
School Assembly, 2:30pm @ The CRC
- Fri 21st** End of Term 3
- Fri 21st** Keetlen Valley Ram Sale
- Sun 23rd** Gateway Camp Fire Yealering
- Mon 24th** Public Holiday for the Queens Birthday

## October

- Mon 8th** Pupil Free Day  
**An afternoon with Sabrina Hahn**  
NCCA Meeting
- Tue 9th** Start of Term 4
- Thu 11** Lincolns Agrimaster Course, 11am @ The CRC
- Mon 15** Rec Council Meeting, 8:30pm @ the Rec Centre
- Wed 17** Lakes Local Action Group AGM Kulin @ 4pm venue to be confirmed
- Thu 18** Fermentation Workshop, 9:30am-2:00pm @ the CRC
- Wed 24** Seafood Van, 3-4pm at the Gazebo

## November

- Thu 8th** Newdegate CRC Christmas Shopping Day
- Wed 21** Seafood Van, 3-4pm at the Gazebo

Coming soon to Newdegate CRC.....

FREE Workshops in Facebook , Ipad, Computers and Smart Phones  
this is through the Good things Foundation connecting up grant for  
Older Australians in rural areas to become more digitally connected.