

# The Gate Post

21st November 2023

\$1 (inc. GST)

Vol 25 Issue 22

*Newdegate's Annual*  
*Christmas Lights*  
*Competition*

*With Christmas just around the corner  
the CRC are excited to announce the  
return of it's annual Christmas Lights  
Competition.*

Register by 1st December with the  
CRC.

*[newdegatecrc@westnet.com.au](mailto:newdegatecrc@westnet.com.au)*

# The Gate Post

Thank you for your contributions towards this weeks Gatepost. Please send in your local news, photos and announcements to [newdegatecrc@westnet.com.au](mailto:newdegatecrc@westnet.com.au) or phone 9871 1791 by

**Monday 4th December @ 12 Noon**

Inclusion **cannot** be guaranteed after this time.

## Contents

Page 4-5	Grain Broker’s Report
Pages 6-9	Shire News
Page 10-11	Christmas Lights Trails in Perth
Pages 12	Police News
Page 15	Astrotourism
Pages 16	Guide to Making a Christmas Ornament Wreath
Page 21	Perth Christmas Pageant Information
Page 22	This Week We Are Reading...
Page 24	Recipe— Muffin Pan Cheesy Scrolls
Pages 26-27	Morton Mayer Scholarship
Pages 28-31	Noticeboard
Pages 32-33	Christmas Lights Competition
Page 34	Puzzles

## NEXT EDITION

Tuesday 5th December  
2023

### Advertising Costs (inc GST)

Full Page	\$35.00
1/2 Page	\$20.00
1/4 Page	\$14.00
1/8 Page	\$8.00

*All additions/changes to be in by 12 noon the Monday prior to printing.*

### Newdegate CRC Opening Hours

Monday - Thursday  
8:30am - 4:30pm

Friday  
9am—2pm

CLOSED  
Saturday & Sunday



Printing, Scanning, Desktop Publishing, Binding, Laminating, Label Making, Faxing, Emailing, Stationary Supplies, IT Support, Exam Supervision, Local Information, Pop-Up Shops, Video Conferencing, Library, Centrelink Access Point, Medicare, MyGov, Room Hire, Equipment Hire, Workshops, Activities, Events

### Room Hire Prices

Small Room  
\$20per hour | \$50per day

Library  
\$30per hour | \$60half day | \$100full day

### DISCLAIMER

- 1) No liability shall be incurred by the Gate Post by reason of any amendments to, or error or inaccuracy in or the partial or total omission of an advertisement or by reason of delay or default or from any other cause whatsoever. If in the opinion of the Gate Post the error clearly reduces the value of the advertisement and the advertiser notifies it to the Gate Post within seven days of the publication date, then one correction will be made without charge.
- 2) While the editors normally aim to publish all materials submitted. The Gate Post reserves the right to refuse to publish or republish any contribution or advertisement without giving any reason.
- 3) No articles, letters or advertisements will be accepted which appear to be defamatory or accusatory, or to favour one side in a legal dispute.
- 4) The Gate Post reserves the right to shorten or otherwise amend any contribution other than advertisements.
- 5) The opinions, views & beliefs expressed in articles & other submissions to The Gate Post do not necessarily reflect the opinions, views & beliefs of CRC staff or committee.



## DID YOU KNOW?

The Newdegate Machinery Field Days have a cool room, paint sprayer and tree planter available to hire.

**Cool Room**  
\$50 base charge + \$10 per day

**Paint Sprayer**  
\$100 per day

**Tree Planter**  
\$100 per day

Contact Len Armstrong for more information or to make a booking.



ABN: 72 616 138 172 EC: 010433

**Electrician Servicing Lake Grace, Newdegate, Pingrup, Varley and Surrounding Areas.**

**Phone Alistair on  
0427 339 472  
for a free quote.**

**For all your electrical, air-conditioning and solar power needs give Alistair a call.**

Email: [alistair@tigersparkelectrical.com.au](mailto:alistair@tigersparkelectrical.com.au)  
Website: [www.tigersparkelectrical.com.au](http://www.tigersparkelectrical.com.au)

## ASHTON CONTRACTING



NEWDEGATE BASED CONTRACTOR

25 YEARS SHEARING EXPERIENCE

MEMBER WA SHEARING INDUSTRY ASSOCIATION (INC)

FOR A RELIABLE & PROFESSIONAL SHEARING JOB

CALL OR EMAIL DARYN  
0428 393 084  
[noddyashton77@gmail.com](mailto:noddyashton77@gmail.com)




## Peter Rundle MLA Member for Roe

**Esperance Office**  
107 Dempster St  
(08) 9071 6555

**Narrogin Office**  
83 Federal Street  
(08) 9881 1225

 [peter.rundle@mp.wa.gov.au](mailto:peter.rundle@mp.wa.gov.au)

 [www.peterrundle.com.au](http://www.peterrundle.com.au)

 [facebook.com/PeterRundleRoe](https://facebook.com/PeterRundleRoe)

## Grain Brokers Australia Weekly Market Report

Written by Peter McMeekin – November 2023

### Another dry season steals Canadian crop output...

Widespread drought across the Prairies this year has seen Canadian grain, pulse and oilseed production fall year-on-year, and the nation's agricultural commodity exports are forecast to suffer the same fate in 2023/24 on the back of the lower exportable surplus according to the October outlook for principal field crops from Statistics Canada.

With the winter/spring crop harvest done and dusted and the summer crop harvest drawing to a close, Canada's principal field crop production is estimated to have decreased by 13 per cent from 97.1 million metric tonne in 2022/23 to 84.5MMT this season. Abandonment of parched crops saw a one per cent increase in the planted area compared to the previous season eroded by the time headers started to roll this year, resulting in an unchanged harvested area of 30.5 million hectares. The average yield across all crop types fell from 3.19 metric tonne per hectare to 2.77MT/ha.

Total wheat production is estimated at 29.8MMT, down from the third biggest crop on record of 34.3MMT last season, but still significantly higher than the 2021/22 drought crop of 22.4MMT.

The harvested area of 10.7 million hectares was 5.6 per cent higher than last year, but the average yield, including durum wheat, came in at 2.8MT/ha.

This was much lower than the 2022 harvest average of 3.41MT/ha, but notably higher than the 2021 average of 2.44MT/ha. Preliminary harvest results had more than 70 per cent of the crop (excluding durum) graded No.1 with an average protein of 14.2 per cent, and a further 25 per cent of the crop graded No. 2 with an average protein of 13.1 per cent.

This season's barley crop came in at 7.8MMT, 21.5 per cent lower than the 10MMT reaped in 2022/23. This is 16 per cent below the average of the previous five seasons but is still 12.3 per cent higher than the 2021/22 disaster.

The harvested area was fractionally higher year-on-year at 2.66 million hectares but the average yield of 2.95MT/ha was 22.2 per cent lower than the 3.79MT/ha average recorded last year. Despite a higher carry-in year-on-

year, total supply has fallen to just 8.75MMT, the second smallest only to the record low of 7.9MMT set in 2021/22.

Canola production held up relatively well, with this year's crop of 17.4MMT, only 1.3MMT lower than that of 2022/23 but still 7 per cent below the five-year average of 18.6MMT. The harvested area of 8.84 million hectares was 250,000 hectares higher than last year, but the average yield for this year's harvest is the lowest in ten years at 1.96MT/ha, compared to 2.17MT/ha in 2022. The Canadian Grain Commission's harvest survey program put the average oil content at 42.8 per cent, with 98 per cent of the crop categorised as the highest grade.

Canada is traditionally a big producer of oats, but this season's crop of 2.4MMT was 53.4 per cent lower than the 5.2MMT harvested last season. It all started at seeding, with the planted area down by 570,000 hectares compared to the previous season.

That seasonal difference carried through to the harvested area of just 0.83 million hectares. A much lower yield of 2.94MT/ha compared to 3.73MT/ha a year earlier completed the dismal production picture.

Row crop production has surprised to the upside with warm temperatures and good soil moisture conditions in the eastern provinces supporting average to above-average yields. Corn production increased from 14.5MMT to 14.9MT due to a 4.1 per cent increase in the harvested area to 1.5 million hectares. The average yield of 9.93MT/ha is slightly lower than last year's average of 10.07MT/ha.

Soybean production is pegged 0.2MMT higher season-on-season at 6.7MMT, marginally higher than the five-year average of 6.5MMT. Like corn, the harvested area is up, and the average yield is down, showing 2.28 million hectares and 2.95MT/ha, respectively.

The main pulse crops in Canada are dry peas and lentils, with production this season each falling 33 per cent to 2.27MMT and 1.54MMT, respectively. The lower output is a function of a lower harvested area and a sharp fall in yields due to the drought across western Canada.

On the trade side of the equation, Statistics Canada is calling total 2023/24 season exports of all principal field crops 45.5MMT, 14 per cent lower than the 53.09MMT export program in 2022/23. Early season wheat exports have been quite brisk, with 5.1MMT shipped in the first 13 weeks of the Canadian marketing year (August to July), 11 per cent ahead of the same period in the 2022/23 season. The Canadian export program typically peaks in October each year before slowing down through the winter months.

Total wheat exports are forecast at 21.3MMT, down from 25.66MMT last season but significantly higher than the 15.07MMT shipped in the 2021/22 season. The USDA left Canadian wheat exports unchanged at 23MMT in its November global supply and demand update, but it also has production higher at 31MMT to balance the numbers. A private export forecast from Mercantile Consulting Venture in Winnipeg puts exports much lower at 18.5MMT.

Statistics Canada is pegging 2023/24 barley exports 8.75MMT, 1.8MMT lower season-on-season, with carry-out stocks falling to an extremely tight 0.55MMT. Oat exports are pegged at 2.45MMT, only slightly lower than the 2.67MMT of sales in 2022/23, reducing the carry-out to a perilously low 0.35MMT. Canola shipments to international clients are forecast at 7.7MMT, down marginally from 7.95MMT in the 2023/23 marketing year.

Corn exports are projected at 1.85MMT, slightly lower than last season, as domestic intake recovers. On the other hand, the soybean export forecast is 13.7 per cent

higher at 4.8MMT, with domestic use slightly lower.

Dry pea and lentil trade are likely to be 26 per cent and 36 per cent lower than last season at 1.9MMT and 1.4MMT, respectively.

Meanwhile, the Prairies, Canada's most crucial crop-growing region, have become hotter and drier over the last 120 years, according to research released by the University of Alberta last week.

The review, which looked at climate data for the cropland provinces of Alberta, Saskatchewan and Manitoba from 1901 to 2021, revealed a consistent trend of higher air temperatures in winter and spring, less snowfall and more disruptive weather events.

The milder winters will likely result in lower snow levels throughout the winter and periods of mid-season snow melt, leaving the exposed crop more susceptible to climate extremes.

This will, in turn, lead to less soil moisture in the early spring months, which is critical for sustaining post-dormancy crop growth.

The warmer growing conditions will also increase soil moisture evaporation rates, meaning more spring and summer rainfall will be required to sustain crop growth, health, and, ultimately, grain production. While the warmer climate could allow for a northward expansion of the current Canadian cropping area, the report concluded that any output gains will likely be outweighed by lower and less consistent production in the lower latitudes.

Call your local Grain Brokers Australia representative on **1300 946 544** to discuss



# Community Newsletter

PO Box 50, Lake Grace WA 6353 Ph: (08) 9890 2500 Fax: (08) 9890 2599 Email: [shire@lakegrace.wa.gov.au](mailto:shire@lakegrace.wa.gov.au)



**GOT 15 MINUTES TO BURN?**

Creating a bushfire plan takes just 15 minutes and is the best way to keep your household safe.

My Bushfire Plan

Available on the App Store

GET IT ON Google Play

*Did you know?...*

Over 90% of WA is bushfire prone and bushfires can start at any time; everyone needs to be prepared. This year's fire season has started earlier than usual, and is expected to be hotter and drier, increasing the risk of bushfires.

*What is My Bushfire plan?*

The [My Bushfire Plan](#) website and companion app is a bushfire preparedness tool, providing you with one place to prepare, store, print, share and update your bushfire survival plan anytime, from any device. You create your own plan by considering the unique set of circumstances that relate to you and your household. You can access your bushfire plan anytime—even without an internet connection.

**THERE WERE OVER 600** large bushfires in southern WA last year.

**GOT 15 MINUTES TO BURN?**



*Why should I create a plan?*

Bushfires are unpredictable and can quickly turn into a life threatening situation. Having a plan and sharing it with your family is the best chance of survival. It is very difficult to make decisions when you are stressed, frightened and confused. Most people will not consider all the risks and options they have when a bushfire is approaching and underestimate the time it takes to evacuate family, pets and gather important items, medicines and support equipment. Thinking through your bushfire risk and the possible impact it may have on your safety and escape routes can save you and your family's life.

*\*\*The My Bushfire Plan website and companion app does not provide bushfire warnings and alerts. During a bushfire, emergency services will provide as much information as possible through a number of different methods, including [www.emergency.wa.gov.au](http://www.emergency.wa.gov.au), DFES Facebook Page, Twitter and Local Government sources. Please visit [www.emergency.wa.gov.au](http://www.emergency.wa.gov.au) for official warnings and current information for bushfires, storms, cyclones and floods.*

An Ordinary Council Meeting will be held at 3.30pm 20 December 2023, Shire of Lake Grace Council Chambers, 1 Bishop Street, Lake Grace WA 6353

The Agenda will be available on [www.lakegrace.wa.gov.au](http://www.lakegrace.wa.gov.au)

(A minimum of 15 minutes is set aside for public question time, giving members of the public an opportunity to ask questions relating to Shire activities. All welcome)

## Community Information



### Seniors Week 2023: Beyond the Generations

WA Seniors Week 2023 was celebrated from 12-19 November, with events held within the Shire to recognise the important role that seniors play in our communities.

Lake Grace and Districts Seniors Group, Lake Grace District High School, Newdegate Primary School, Newdegate Community Resource Centre, Lake Grace Hospital, and Lake Grace Men's Shed joined together for 'Beyond the Generations', a series of intergenerational events and activities.

'Beyond the Generations' events were held at Lakes Village Hall, Lake Grace, and Newdegate Community Resource Centre and Library. Senior members of the community had the opportunity to talk, play games, and participate in activities with students from their local school, followed by a shared morning tea and lunch.

Students from Lake Grace DHS also joined members of the Lake Grace Men's Shed for woodworking activities and a sausage sizzle. There were plenty of opportunities to use different tools and techniques to complete a variety of projects.

All events were well attended, and the feedback has been very positive. The consensus from those in attendance is that intergenerational activities should be held more often in the community.

Funding for 'Beyond the Generations' was received from the Seniors Week Community Grants Program; coordinated by the Council on the Ageing (WA) in partnership with the Department of Communities and Lotterywest.



#### **JOB OPPORTUNITY** **Plant Operator/General Hand** Full Time—9 day fortnight

**Competitive salary; Staff housing with subsidised rent available**

We are seeking a reliable Plant Operator/General Hand to join our Infrastructure Team to carry out tasks associated with the maintenance and construction of road systems throughout the Shire of Lake Grace. Applicants must hold a HC licence, and a White Card.

The application package, including a position description, can be found at: [www.lakegrace.wa.gov.au/employment](http://www.lakegrace.wa.gov.au/employment) or call 9890 2500.

Applications should be addressed to; Chief Executive Officer, Shire of Lake Grace, PO Box 50, Lake Grace WA 6353, or email to: [shire@lakegrace.wa.gov.au](mailto:shire@lakegrace.wa.gov.au)

*Applications close 4.00pm on Friday 1 December 2023*

*The Shire of Lake Grace is an equal opportunity employer*



Follow our Facebook page  
<https://www.facebook.com/ShireofLakeGrace/>

# Community Information



## BEYOND THE Generations



Supported by





## Community Information

### Office Open Hours

Monday - Friday 8.30am - 4.00pm  
Staff can be contacted via phone between 8am—5pm.

### Licensing Payments

All licensing payments are to be made in person at the Shire of Lake Grace, 1 Bishop Street, Lake Grace, *(please phone ahead for availability)*.

Monday to Friday from 8:30am to 4:00pm

As an agency, we process the majority of transactions including: renewals, transfers, number plate orders, boat registration renewals and new licence applications.

### Lake Grace Swimming

Open: Wednesday to Monday 12.00pm—6.00pm

Closed: Tuesday

Early Morning Swimming:

Monday, Wednesday, Friday 5.30am—7.00am

### Driving Assessor

Lake Grace has one assessment day, held on the first Friday of each month.

Bookings are essential for all Practical Driver's Licence Assessments as there is often a waiting list. Bookings can be made at the Shire office on 9890 2500 until further notice.

The next Practical Driving Assessor (PDA) will be at the Shire of Lake Grace office on:

December (to be confirmed)

For more information go to: [www.transport.wa.gov.au](http://www.transport.wa.gov.au).

### Libraries

Lake Grace Public Library School Place Absolon St

Monday - Friday 9am - 5pm

Closed for lunch 12.30 - 1pm

Newdegate Public Library Collier St

Monday - Thursday 8.30am - 4.30pm

Closed for lunch 12noon - 1pm

Friday 9am - 2pm

Lake King Library Newdegate/Ravensthorpe Rd

Tuesday and Thursday 8.30am - 3.30pm

### Town Planning & Building

Please contact the Shire of Lake Grace on 9890 2500 or email [shire@lakegrace.wa.gov.au](mailto:shire@lakegrace.wa.gov.au) for all Town Planning and Building Surveying enquiries and requests.

### Environmental Health

The Shire's Environmental Health Officer, Brendon Gerrard, can be contacted via the Shire on 9890 2500 or email [shire@lakegrace.wa.gov.au](mailto:shire@lakegrace.wa.gov.au).

### Tip Times

Lake Grace

Monday & Wednesday 9am - 2pm

Saturday & Sunday 9am - 4pm

Newdegate

Wednesday 9am - 1pm

Saturday 9am - 1pm

Lake King and Varley

Open every day

### Recycling Services

Household Waste Collection is a weekly service and collected each Tuesday for Lake Grace, Newdegate, Lake King & Varley.

Recycling is a fortnightly service and alternates between Lake Grace and Newdegate. See below for the upcoming recycling collection dates.

Newdegate	Lake Grace
Tuesday 28 November	Tuesday 5 December
Tuesday 12 December	Tuesday 19 December

Please Note: There is no kerbside recycling collection service in Lake King or Varley.

The recycling bins are collected by Warren Blackwood Waste and transported to a recycling facility. If items which are not recyclable are found, the contents can't be recycled and the load will be directed to the landfill.

If an item is covered in food, it is not recyclable. Food is one of the worst contaminators in the recycling process. By using the yellow top recycling bin correctly you are contributing, in a combined community effort, to reduce the amount of rubbish that is directed to landfill facilities each year.

For more information on Waste Management visit the Shire's website [www.lakegrace.wa.gov.au](http://www.lakegrace.wa.gov.au).

# *Christmas Lights and Decorations in Perth*



## **Mandurah Canal Christmas Lights Trail**

The Mandurah residents who live on the canals like to dress up their houses for Christmas with over 200 houses along the canals lit up all in the spirit of Christmas. Experience a Christmas wonderland on water in Mandurah.

Thanks to the Mandurah canal residents for putting in an enormous effort and dressing up their houses for Christmas at their own expense, every year more than 200 homes come alive with lights and everyone wants to stand out. There is some healthy competition in the canals and people who do not light up their houses are called the grinch – in a friendly manner of course. Some residents have about 100 items plugged in, spend about 80 man-hours to install their Christmas lights decoration, and use 15 timeclocks powered by 30 power boards from 20 extension leads.

The best way to watch this spectacle is from a boat. As you drift down the canals by boat or on board a cruise or private charter, there is a water wishing well with all proceeds going to local charities. Ever popular, this delightful cruise experience becomes increasingly beautiful each year. Dress for the occasion, sing along with the Christmas carols and bring your Christmas cheer. This is a very special tour at a special time of year.

**Dates:** Dec 1 –Jan 7



## **Mandurah's Christmas Lights Trail**

The Mandurah Christmas Lights Trail is back bigger and better than ever before, with bright new additions around every corner from the Eastern Foreshore, into Mandjar Square and across to the Mandurah Ocean Marina. This free-to-view trail will be lighting up the night from December 1 to January 7.

Whether you wander through the lights up close or view them in all their glory from afar, you're sure to stumble across festive fun in the heart of the city, this Christmas in Mandurah.



While the Christmas lights are on display, there'll be fun things to enjoy with family and friends along the way.

The Christmas Lights Trail is proudly brought to you by the City of Mandurah.

## Wanneroo Botanic Gardens

Experience the Botanic Gardens as they are transformed into a Christmas wonderland. From late November to mid January each Christmas don't miss the chance to visit the iconic Botanic Gardens, just 5 minutes from Joondalup.

Wind your way through 5 acres of stunning gardens and more sparkly trees than ever! Each year immerse yourself in a truly unique Christmas light event in the heart of Perth's Northern suburbs. Guests can visit the Gardens at any time during opening hours, with 7pm onward being the best time for viewing the lights.

**Dates:** Nov 23—Jan 15

### FREE ADMISSION

For all mini golf players and Leap-frogs dining Guests

### \$5 SPECTATOR/SIGHTSEEING

For all spectator and/or sightseeing Guests



## The Rio Tinto Christmas Lights Trail

The Rio Tinto Christmas Lights Trail is back in town, lighting up the City and Northbridge for 47 nights with 22 amazing light installations.

You can walk the full trail to see all 22 installations or take the new family-friendly route, 'The Merry Mile'. Enjoy festive entertainment and performances throughout the City every Friday and Saturday night, including weekly visits from Santa Claus.

From 6pm  
Venue: Perth City  
Dates: Nov 17—Jan 2

*Proudly brought to you by the City of Perth, naming rights partner [Rio Tinto](#) and major supporter [Lotterywest](#).*

- |  |   |
|--|---|
| <ul style="list-style-type: none"> <li>1 City Beats – Northbridge Piazza</li> <li>2 Cultural Centre Christmas – Perth Cultural Centre</li> <li>3 Christmas in Wonderland – WA Museum Boola Bardip</li> <li>4 The Moodjar Tree – Yagan Square</li> <li>5 Christmas Cadillac – Raine Square</li> <li>6 140 – Illumine: Stories that Resonate – 140, Railway Lane</li> <li>7 PERTH – Forrest Place</li> <li>8 What's Going on in the North Pole? – Forrest Place</li> <li>9 City of Perth Christmas Tree – Forrest Place</li> <li>10 Quokka Selfie – Forrest Chase, Level 1, Padbury Walkway</li> <li>11 Summer Santa – Murray Street Mall</li> </ul> | <ul style="list-style-type: none"> <li>12 Vintage Christmas Train – Central Park</li> <li>13 Magical Owl – enex, Hay Street Mall</li> <li>14 Christmas Bauble Tree – Hay Street Mall</li> <li>15 A Luminous Eden – Perth Town Hall</li> <li>16 Constellation Labyrinth – Cathedral Square</li> <li>17 Christmas in the West – St George's Cathedral</li> <li>18 Mooditj Yongas (Solid Kangaroos) – Council House</li> <li>19 Council House Light Show – Council House</li> <li>20 Engulfed – Barrack Square</li> <li>21 Symphony of Lights – Barrack Square</li> <li>22 Galleon – Elizabeth Quay</li> </ul> |
|--|---|



# POLICE NEWS

## LAKE GRACE POLICE STATION

56 STUBBS STREET, LAKE GRACE. 6353

Phone : 9890 2000 Fax : 9865 1429

Email: [lake.Grace.Police.Station@police.wa.gov.au](mailto:lake.Grace.Police.Station@police.wa.gov.au)

### Station News

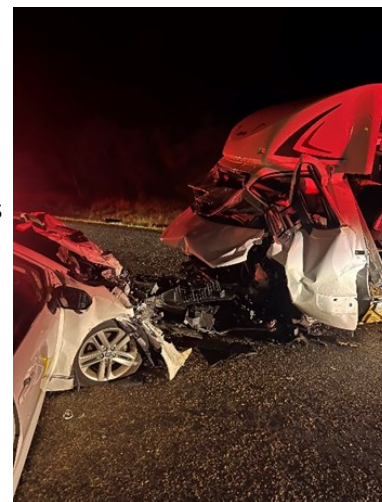
Wade is almost back from his Annual leave, I say almost back, he now has a two-day conference in Perth for all Aboriginal and Torres Strait islander police officers and staff, no doubt he will give you an insight in the next news article.

### Traffic News

I had the unfortunate task of recently attending a double fatal crash that happened approximately 20km west of Corrigin. The incident involved a camper van and a hire car.

The two occupants of the camper van had left wave rock and were travelling towards Perth, the two occupants of the hire car were travelling towards Corrigin, it initially appears that the hire car has entered into the lane of the camper van, causing them to collide head on.

The occupants of the hire car received fatal injuries at the scene, the two occupants from the camper van somehow survived and were airlifted to Perth where I have been told, that despite the seriousness of the injuries, they are both expected to make a recovery.



Their survival is no doubt down to pure part luck; however, a lot of credit must go to the SJA medic and Volunteer's along with the DFES volunteer's that attended the incident.

The Major Crash Unit based in Perth attended the scene and their inquiries are ongoing.

I know that some of you may question why we appear to focus so much on Road Policing at Lake Grace, we make no apologies for doing so as our aim is to try and prevent these types of incidents occurring, speed and inattention are major contributors to road crashes.

### Crime News

There was a report of a stolen vehicle from a farming property on the Hyden-Norseman Road that occurred on the 18 November. The vehicle stolen is a Silver Landcruiser 79 series wagon, converted to a tray back. It was registered with Ravensthorpe plates RA3664, to date it has still not been recovered.



If you are still in the habit of leaving keys in your vehicle locked or unlocked, please stop doing so, it makes life very easy for the opportunist thief. I have said it before; Big city crime is well and truly amongst us, don't be complacent. We get a lot of transients travelling around our area and some of them don't need a second invitation to commit crimes.

Take care and stay safe.

Regards

Lake Grace Police



# CHRISTMAS WREATH MAKING WORKSHOP

At the NCRC  
2pm  
Sat 02 December

**Book with the CRC or humanitix**

<https://events.humanitix.com/christmas-wreath-making-workshop-f77s7d7k>

\$100



# We're hiring in Newdegate

We believe our staff are our greatest asset as we work together to deliver the very best in Home Care in the Wheatbelt.



We are looking for caring and passionate nursing and Home Care support workers in the Wheatbelt.

Our Care with Purpose people-centred care model promotes dignity, respect, privacy and independence.

As a not-for-profit organisation, we are inclusive and welcome all faiths and backgrounds. We offer competitive hourly rates, casual loading and full training. We have both permanent and casual roles available now.

*If you would like to discuss further call 1300 244 000 or email your CV to [homecare@catholichomes.com](mailto:homecare@catholichomes.com)*



*care with purpose*

CATH0391

ADVERTISEMENT



**Contact me to discuss State Government matters - let me know what is important to you**

**Hon. Shelley Payne MLC**

Member for Agricultural Region

92 Dempster Street, Esperance WA 6450

📞 9072 1786 📧 [ShelleyPayneMLC](https://www.facebook.com/ShelleyPayneMLC)

✉️ [shelley.payne@mp.wa.gov.au](mailto:shelley.payne@mp.wa.gov.au)

Authorised by Shelley Payne, 92 Dempster Street Esperance WA 6450



Image: NASA Hubble Space Telescope View of Andromeda

Andromeda is in our galactic neighbourhood of local galaxies. It's 2.5 million light years away and they say it is the most distant object visible to the human eye! With the weather warming up, now is a great time to get out under a dark sky and explore your Universe. Through winter the orientation of Earth allows us to look into the centre of our own galaxy, but in summer we look away from the centre, allowing us to search for other galaxies or 'star cities'!

The Milky Way is part of a group of galaxies that are all linked together by the pull of gravity, called the Local Group. There are about 54 galaxies in our Local Group. These are mostly dwarf galaxies clustered around the 3 largest of Milky Way, Andromeda and Triangulum. November is the best time to see Andromeda. It's always thought to have been larger than our Milky Way Galaxy. However, recent research by the University of Western Australia node of the International Centre for Radio Astronomy Research estimates that Andromeda is the same size as the Milky Way or perhaps even slightly smaller. Brush up on the new research at the International Centre for Radio Astronomy Research.

You will need a very dark sky with no moonlight and a clear view to the northern horizon to see Andromeda. Using a star chart or a free online tool like [SkySafari AR](#) or [Stellarium](#) will help you find Andromeda.

First, using a star chart or app, search for and locate the star called Mirach low on the northern horizon. Use this star and the pattern of fainter stars that are below and to the left of Mirach to try and locate Andromeda with the naked-eye.

**When to look:** 8pm, 7th December to 14th December

**Which direction to look:** Low on the northern horizon



**What you'll need:**

- 12 inch wire wreath frame
- Wire Cutters
- Colourful shatterproof ball ornaments
- Floral wire

**How to make A Christmas Ornament Wreath**

1. Create little bundles of 3 or 4 ornaments using the wire. Cut about 6 inches of wire, make it into a v shape and add ornaments. Give it a twist to keep them all together.



2. Once you have quite a few bundles, attach each bundle to the wire wreath form. Place each bundle right next to the one before it to keep the ornaments really close .



Once done, clip the excess wire for each bundle off and bend the ends under so they won't poke you or scratch up the wall or door once the wreath is hung.

Then it is ready to hang!





# Outdoor Christmas Movie Night 'SLF'

**FRI 8 DEC** | **DOORS OPEN 6PM** | **FILM 7PM**

**NEWDEGATE OVAL**  
BYO Blankets, Food & Drinks



POPCORN  
AVAILABLE  
TO BUY

CRICKET CLUB  
BAR OPEN



Book Via QR CODE or <https://events.humanitix.com/outdoor-christmas-movie-night>

The Newdegate Country Club renovations and refurbishment was officially opened by Mr Rick Wilson Federal Member for O'Connor, Shadow Assistant Minister for Trade on Friday 3rd November. Speeches were heard from Shire President Len Armstrong and Rick Wilson before the unveiling of the commemorative plaque. A group photo was taken for posterity followed by some light refreshments. Attendees included representatives from the Newdegate Machinery Field Days Inc. Committee, Newdegate Community Cropping Group, Newdegate Golf Club, Newdegate Bowling Club, Newdegate Country Club, life members, Shire staff and interested ratepayers. This project was funded with significant input from the Newdegate Community Cropping Group, Newdegate Machinery Field Days Inc. Committee, Shire of Lake Grace, and federal government funding through the Drought Communities Program and Local Roads and Community Infrastructure Programs.



**SPEECH AS PRESENTED BY THE LAKE GRACE SHIRE PRESIDENT, CR LEN ARMSTRONG FOR OFFICIAL OPENING OF RENOVATIONS AND REFURBISHMENT OF THE NEWDEGATE COUNTRY CLUB 3 NOVEMBER 2023**

Thanks Chief for the introduction and I welcome you all here today. It is unfortunate that a lot of potential attendees are flat out with their harvesting operations and therefore could not be here today. I know that it is fraught with danger when you start to list individuals for their involvement in any community endeavour because invariably you miss out on recognising all those who were involved. However I would like to name those club members, be it from Country Club executive, golf or bowls club members that were a part of the renovations committee that was formed in 2018.

They, being the community members that drove the project so special thanks to Beau Waddell, Barry Rick, Clive Morton, Wes Hall, Trish Rintoul, Judy Walker and Roz Lloyd as the Shire Councillor rep. A big thank you also to the Shire CEO Mr Alan George who not only wore the hat of the CEO but also the overall project manager and I would also like to reiterate the CEO's comments about the input throughout the project of the shire staff's involvement. Well done to everyone involved. I would also like to take the opportunity to recognise and thank those that have had anything to do in setting up, or in the conduct of today's function, Alex and Aimee for behind the scenes input, Sandy Armstrong for coordination with the bowling ladies and friends for food preparation and Gar for the bar operations, thank you.

The transformation of the old, to the new renovated and refurbished is about sixty years in the making. The original building built approximately early 1960s had a major renovation / extension in the mid 1980's which I might add created a two-level floor. By the early 2000's it was recognised that the roof needed to be replaced which went ahead a few years later. It was also recognised that the kitchen needed a major revamp with cupboards and appliances needing to be upgraded, a significant but not overly large endeavour until it was highlighted that the inadequate toilets, change rooms, compounded by the realisation that the ladies toilet door was in close proximity of the kitchen and without a legally required disabled toilet and shower being available meant that a complete rethink had to be undertaken and so the "bullet had to be bitten."

The project committee was put in place with the charter to move the renovation project forward in the best way possible. It was envisaged that to bring the building up to present day standard the building would have to be extended so now the rear wall is some 8 metres further out from the original and with keeping the kitchen renovations to the fore with indoor barbeque areas, a not overly large endeavour had blown out cost wise to be a rather large endeavour. Complete demolition and complete rebuild was a consideration however was cost prohibitive with an estimated 2 to 3 times greater cost than a full renovation.

To move forward with the project the next major concern was sourcing the funding for such a massive undertaking. Thankfully as already mentioned by the CEO, federal government funding via the Drought Communities Funding program, Community Cropping program and Field Days Committee finance was forthcoming. To David Butcher, Gary Guelfi and Wes Hall and all the community members involved with the cropping programme a big thank you for your substantial donation.

Also to the Field Days committee ably led by Craig Newman and now Ashley McDonald thank you. And finally to Alan George and his staff for the input of spending rate-payers money on behalf of this project, and convincing Shire Councillors via agenda items that this project was well worth while pursuing, and which ultimately the councilors agreed upon. It was a discussion point during deliberations that this building would, once renovated, be recognised as the second most used building behind that of the

Newdegate Recreational Centre, and now with the building being fully renovated and refurbished with a few minor tweaks is now being fully utilised with both golf and bowling clubs plus community social, recreational, training courses and different interest groups seminars, all being conducted here. In fact next Tuesday 7 November community groups are holding a Melbourne Cup Day function here. So in closing I apologise for missing any individual in recognition of a job well done and thank you for all your input throughout the five year process of ending up with a building that ticks the box on so many areas, being modern, functional and a credit to the community. Well done everyone, and thank you.

# Ever wanted to be a Yoga or Pilates Instructor?

WELL HERE'S YOUR CHANCE!

WITH THE HELP OF OUR  
CBH GRASSROOTS GRANT  
WE CAN FUND A LUCKY INDIVIDUAL TO  
TRAIN TO BECOME A YOGA OR PILATES  
INSTRUCTOR.

IF YOU'RE INTERESTED AND WOULD  
LIKE TO KNOW MORE PLEASE CONTACT  
THE NCRC FOR AN APPLICATION FORM.

[Newdegatecrc@westnet.com.au](mailto:Newdegatecrc@westnet.com.au)  
0898 711 791



# SATURDAY 2 DECEMBER

## KEY INFORMATION



### LEGEND

- Pageant Route
- No Viewing
- Medical
- Constable Care
- Toilet
- Accessible Viewing
- Crossing Points





[www.7perthchristmaspageant.com](http://www.7perthchristmaspageant.com)
The West Australian
BHP
CITY OF PERTH  
City of Light

### WHAT TIME DOES THE ALINTA ENERGY CHRISTMAS PAGEANT START AND FINISH?

The pageant starts at 7.30pm and will finish after the last float reaches the finish area at approximately 9.30pm.

### WHERE SHOULD I SIT TO WATCH IT?

Prime viewing is anywhere East of the start line, St Georges Terrace and William Street, all the way to the corner of St Georges and Victoria Avenue. There is NO public viewing of the pageant WEST of the start line.

When finding a location please listen to directions from SES Volunteers, Security Staff and Event Staff. Your safety and the safety of others is very important to all involved with the event.

To ensure everyone's safety, please do not sit on the kerb or edge of the road when roads are open.

We recommend children sit at the front (behind the blue line) and adults stand behind, ensuring everyone has the best view of the pageant.

Every year, the pageant draws very large crowds. Please consider this when planning your arrival time and viewing location.

The start line at William Street is a very popular location, however not always the best spot to view the pageant. We suggest you move east down the pageant route to secure the best possible viewing location.

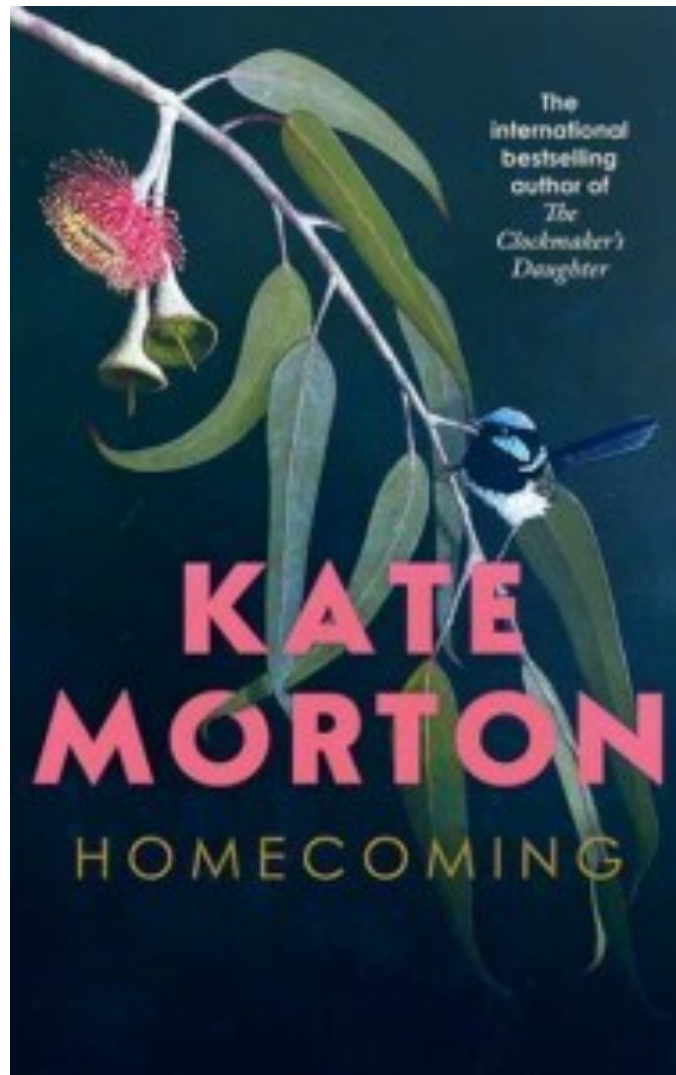


This week we are reading...

# Homecoming

By

Kate Morton



Adelaide Hills, Christmas Eve, 1959: At the end of a scorching hot day, beside a creek in the grounds of a grand country house, a local man makes a terrible discovery. Police are called, and the small town of Tambilla becomes embroiled in one of the most baffling murder investigations in the history of South Australia.

Many years later and thousands of miles away, Jess is a journalist in search of a story. Having lived and worked in London for nearly two decades, she now finds herself unemployed and struggling to make ends meet. A phone call summons her back to Sydney, where her beloved grandmother, Nora, who raised Jess when her mother could not, has suffered a fall and is seriously ill in hospital.

At Nora's house, Jess discovers a true crime book chronicling a long-buried police case: the Turner Family Tragedy of 1959. It is only when Jess skims through its pages that she finds a shocking connection between her own family and this notorious event — a mystery that has never been satisfactorily resolved.

An epic story that spans continents and generations, *Homecoming* asks what we would do for those we love, how we protect the lies we tell, and what it means to come home. Above all, it is an intricate and spellbinding novel from one of the finest writers working today.

# **FYFE TRANSPORT**

## **NEWDEGATE**

**FOR YOUR TRANSPORT REQUIREMENTS**

- **FERTILIZER  
(Bulk or Liquid)**
- **LIME-GYPSUM**
- **BLUE METAL**

<b>PHONE</b>	<b>AARON</b>	<b>0417991684</b>
	<b>DAVID</b>	<b>9865 1129</b>

## Make the Best In-Season Nutrient Decisions



Using nutrient Fuel Gauges and inSITE Plant Analysis, your local Area Manager can help you make the best in-season nutrient decisions.

Speak with Brett today!



**Brett Coxon, Area Manager - Lake Grace**

**Mobile:** 0427 766 506

**Email:** [bcoxon@summitfertz.com.au](mailto:bcoxon@summitfertz.com.au)



## Muffin Pan Cheesy Scrolls

### Ingredients

- 185ml (3/4 cup) lukewarm water
- 2 x 7g sachets dried yeast
- 1 tsp caster sugar
- 600g (4 cups) bread flour
- 2 tsp salt
- 250ml (1 cup) lukewarm milk
- 160g (2 cups) grated tasty cheese
- 1 cup roughly chopped herbs

### Method

Combine the water, yeast and sugar in a jug and set aside in a warm place for about 5 minutes, or until starting to become frothy. Combine the flour and salt in a large bowl, and make a well in the centre.

Pour the yeast mixture and milk into the flour. Use a wooden spoon and then your hands to mix to a soft dough. Turn out onto a lightly floured surface and knead for 10 minutes or until smooth and elastic. Alternatively mix in a stand mixer fitted with a dough hook for 5 minutes.

Grease a mixing bowl generously with olive oil. Transfer the dough to the bowl and cover with plastic wrap. Stand in a draught-free place for about 45 minutes or until doubled in size.



Punch down dough and turn onto a lightly floured surface. Use a rolling pin to roll out to a rectangle about 40 x 30cm, with the long edges at the top and bottom. Sprinkle evenly with cheese then herbs, leaving a 2cm border along each long edge.

Starting at the bottom edge (closest to you), roll up into an even log then cut in half. Cut each piece in half again, then cut each of the pieces into 3 thick slices. Grease 12 large (3/4 cup) muffin pans with oil. Gently lift each piece into a muffin hole, cut side up. Cover with a clean tea towel and leave for 20 minutes to rise. Preheat oven to 180°C/160°C fan forced.

Brush tops with milk and bake for 25-30 minutes or until golden brown. Transfer to a wire rack and cool to room temperature.



STUBBY'S ELECTRICAL PTY LTD T/AS

**OUTBACK**

LIC NO EC 004197



For all your domestic, rural and industrial electrical installations and repairs.

Split system air conditioning installation and decommissioning.

Large range of Australian brand LED floodlights, downlights, hibays and fluorescent replacements.

Ditchwitch hire and cable location.

With over thirty years experience in Lake Grace and surrounding areas contact Stubby or Reid anytime.

**Stubby 0429651092 or Reid 0429651069**

**Office 98651092 all hours Fax 98651328**

LIC NO :EC004197

RTA NO :AU29828

*Visiting on Thursdays*



*Quality Seafood delivered  
to your door*

**WEST COAST SEAFOOD VAN  
AT NUTRIEN**

**Next Visit: 30th November 2023**

Phone PHILIP on 9821 1141 or  
Mobile 0427 241 204



**2023  
MORTON-MAHER  
SCHOLARSHIP  
SELECTION CRITERIA**



*This is a scholarship awarded to a student, between the ages of 15 - 19 inclusive, who attended Newdegate Primary School and whose family is/are still residing in Newdegate, and who shows outstanding talent, sportsmanship, achievement and aspirations to continue to pursue their chosen field of sport/sports to a higher level.*

*Please address each criteria and supply as much specific detail as possible regarding the level of achievement, ability and future potential in this/these sport/s.*

- 1. SPORTS PLAYED:**
- 2. ASSOCIATION/TEAM LEVEL:**
- 3. SPECIAL TRIALS/SELECTIONS:**
- 4. COACHING ACTIVITIES/ACCREDITATIONS:**
- 5. FUTURE ASPIRATIONS:**
- 6. FURTHER REFERENCES: (Please include copies of any written references)**

*Please email to [rozlloyd@westnet.com.au](mailto:rozlloyd@westnet.com.au) before the 1<sup>st</sup> December, 2023.*



## **Morton-Maher Scholarship**

(Inaugural meeting December 1987. First scholarship 1988)

### **2023**



The Morton-Maher Scholarship is a memorial to two past students of the Newdegate Primary School. Rodney is the son of Ken and Marie Morton and Jason is the son of Basil and Sandy Maher. They were fatally wounded in a tragic accident at the OFA Grandfinal in Ongerup in 1986. This Award is presented to an ex-Newdegate student who is showing outstanding skills, achievement and dedication to their chosen sport/s. Sportsmanship and leadership are also considered an integral quality in great sportspersons.

The Morton-Maher Scholarship Winners' names are displayed on a Memorial Board in the foyer at the Newdegate Recreation Centre.

The scholarship is open to 15-19 year olds, who attended Newdegate Primary School and whose family is/are still residing in Newdegate. The scholarship application and information will be advertised in the local Gatepost in October/November, Please pass this information on to family members or any eligible candidate. Resumés need to be emailed to the secretary by the 1st December.

Further information is available from the president, Dennis Knill or secretary, Roz Lloyd.

# NOTICE BOARD

WEATHER FORECAST				
Day	Max Temp	Min Temp	Possible rainfall	Chance of Rainfall
Wed 22nd	33°C	14°C	0mm	5%
Thu 23rd	33°C	16°C	0mm	5%
Fri 24th	35°C	16°C	0mm	0%
Sat 25th	32°C	13°C	0mm	5%
Sun 26th	31°C	11°C	0mm	5%
Mon 27th	33°C	12°C	0mm	10%

*Australian Government Bureau of Meteorology.  
As of Tuesday 21st November 2023*

**TIP OPENING TIMES**

**Wednesday 9am—1pm**  
**Saturday 9am—1pm**



**Recycling**  
**Fortnightly Service**  
**Next Date:**  
**Tuesday**  
**14th Nov 23**



\*Save the date \*

Presentation Night at the Rec Centre  
12th December

**NEWDEGATE FOOTBALL CLUB** is seeking expressions of interest for the positions of league and reserves coach for 2024.

Please contact Jeremy Richardson on 0409 419 014 or email [newdegatefc@outlook.com](mailto:newdegatefc@outlook.com) if you would like to know more.

**Newdegate Machinery Field Days**

## POSITION VACANT: Secretary

**Duties include:**

- Minuting monthly meetings (template provided)
- General administration tasks (monthly checklist provided)
- Being available to work in the office throughout the event week



*This role has been simplified in recent years and comes with an easy to follow checklist of tasks to be completed each month.*

*Essential tasks are minimal and the role can be varied depending on how much time you want to commit to it.*

**Benefits include:**

- Having an integral role in a really fantastic event that also helps to fund various projects and upgrades within the town
- Being a part of a passionate and supportive committee
- Annual bonus
- Chance to socialise with people in town you may not see often
- Opportunity to bring your own creativity and ideas to the event

*For more information or to discuss further please contact  
Hope Newman on 0475849377*





≈  
Sunday Worship 10am  
Live music, café style  
coffee

All about Jesus

Malcolm and Cathie Kelly  
9871 9032 or 0488 719 032

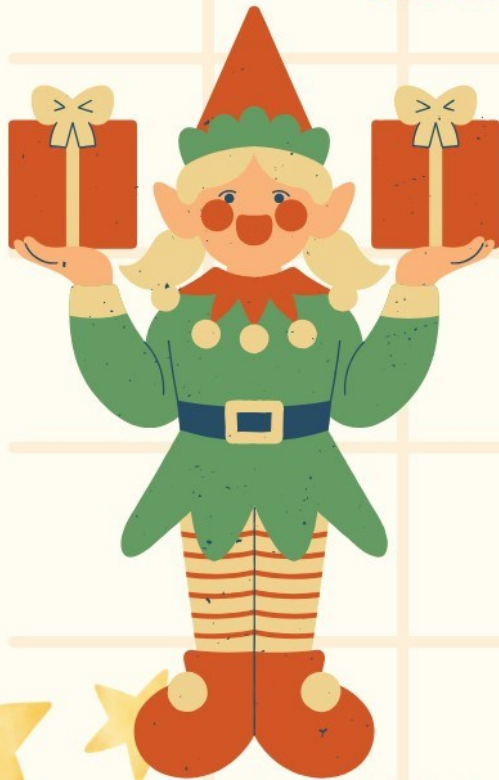
Nick and Lucy Kelly  
0427 417 506  
≈

**GateWay**   
*Promoting life in our community*

NOTICE BOARD

# CHRISTMAS ACTIVITIES MORNING

MON 28TH NOV 9-11:30AM  
INSTEAD OF PLAYGROUP



FACE PAINTING

SENSORY PLAY

CHRISTMAS SING SONGS +  
ACTIVITIES

TAKE HOME CRAFTS

BRING A PIECE OF FRUIT TO  
SHARE

WEAR YOUR FAVOURITE FANCY  
DRESS OR CHRISTMAS OUTFIT

### Newdegate Centenary Merchandise.



Is available to be purchased from the  
Gate Collective

### Newdegate Container Exchange

Open Wednesday's From 10am till 2pm

Machinery Field Days Site, Waddell Street, Newdegate 6355





# Christmas Lights Competition

*Registration is essential and closes 1st December.*

*Entry is free.*

*Lights need to be up and ready for judging by the 15th  
December.*

*Winners announced through the Gatepost on the 19th  
December.*

## **This Year's Categories are:**

*Best Lit House*

*Best Farm Gate Display*

*Best Non-Residential Display*

*Judge's Award*

### TERMS AND CONDITIONS

THE JUDGES DECISION IS FINAL & NO CORRESPONDENCE WILL BE ENTERED IN TO: JUDGING WILL OCCUR FROM DEC 15TH. ENTRANTS ARE AWARE THAT THEIR PROPERTY MAY BE PHOTOGRAPHED & THESE PHOTOGRAPHS MAY BE USED IN PROMOTION OF THIS EVENT BY THE NCRC ON NCRC SOCIAL MEDIA PAGES & THE NEWDEGATE WEBSITE AND THE GATEPOST.

ALL WINNERS WILL BE ANNOUNCED IN THE GATEPOST ON THE 19TH DECEMBER AND ONLINE THROUGH THE NCRC SOCIAL MEDIA CHANNELS.

#### CONDUCT OF ENTRANTS AND RISK

SAFETY & SECURITY ASPECTS OF THE LIGHTING DISPLAY ARE THE SOLE RESPONSIBILITY OF THE ENTRANT. ENTRANTS MUST TAKE INTO CONSIDERATION THEIR LOCAL ENVIRONMENT AND NEIGHBOURS & MUST ENSURE THEIR DISPLAYS REPRESENT NO DANGER TO THE GENERAL PUBLIC. IN ADDITION, CONSIDERATION MUST BE GIVEN TO NOISE AND THE LEVELS OF LIGHT EMITTED BY THEIR DISPLAYS.

ENTRANTS MUST COMPLY WITH ALL COUNCIL REGULATION AND BY-LAWS.



*Newdegate's Annual*

# *Christmas Lights Competition*

*With Christmas just around the corner  
the CRC are excited to announce the  
return of it's annual Christmas Lights  
Competition.*

*Register by 1st December with the  
CRC.*

*[newdegatecrc@westnet.com.au](mailto:newdegatecrc@westnet.com.au)*

ACROSS

- 1) \_\_\_ up (relaxed)
- 6) One of the two genders
- 10) Do some bargain-hunting
- 14) More depressed
- 15) Like some vaccines
- 16) Teen's hangout
- 17) Three new things?
- 20) "Hold on a \_\_\_!"
- 21) Round flatbread
- 22) "Full" or "half" wrestling hold
- 23) Sinking carnivore
- 25) Docs for Dobermans
- 26) Dundee hillside
- 28) Made a pie chart
- 32) Heart hookup
- 34) Anjou, e.g.
- 35) "20/20" ailer
- 38) Two new things?
- 42) "\_\_\_ no hooks"
- 43) Measure of medicine
- 44) Checks for fingerprints
- 45) Readies a hard drive
- 48) Police officer's patrol
- 49) Christian the fashion designer
- 51) Takes a backseat?
- 53) Northern Mexico state
- 55) Fast food staple
- 56) "Amazing Grace" verse ender
- 59) Three new things
- 62) Audition reward
- 63) Less than average tide
- 64) High abode
- 65) Raised racehorses
- 66) Raggedy \_\_\_ (some dolls)
- 67) Leveled, in London

DOWN

- 1) Weakens, as support
- 2) Skin lotion ingredient
- 3) Extra fee
- 4) Hallow conclusion?
- 5) Window covering
- 6) Hod filler
- 7) Song for a diva
- 8) Washroom, for short
- 9) Vivacity
- 10) Put on a happy face
- 11) Possessed, old-style
- 12) Butter alternatives
- 13) Schematic
- 18) Finger decoration
- 19) Jimmied
- 24) Tibet's Sasquatch
- 26) Hindu gentleman
- 27) Fish eggs
- 29) Sleeper's breathing problem
- 30) Dowel
- 31) Pilgrimage
- 33) Small country between France and Spain
- 35) Their job is taxing
- 36) Software prerelease version
- 37) Dermatological diagnosis, sometimes
- 39) "\_\_\_ gloom of night ..."
- 40) Suffix with "real"
- 41) Country hick
- 45) Deceived
- 46) Scouting groups
- 47) Missile "house"
- 49) Transplant need
- 50) Fireplace nook
- 52) Africa's westernmost capital
- 53) Balkan native
- 54) "Black Beauty" author Sewell
- 55) Scottish family
- 57) Albany-to-Buffalo canal
- 58) \_\_\_ out a living (just got by)
- 60) Bear quarters
- 61) Positive reply

MODERN TIMES

By Rob Lee

1	2	3	4	5	6	7	8	9	10	11	12	13
14					15				16			
17					18				19			
20				21					22			
	23	24							25			
26	27				28		29	30	31			
32				33			34			35	36	37
38					39	40				41		
42				43					44			
		45					46	47	48			
	49	50					51		52			
53					54		55			56	57	58
59					60					61		
62					63				64			
65					66					67		

Easy

				6			
	4		7		1	8	
2	7	8	5				
	1			4			
	9	6	8	2		7	
					8	4	
	6						
	8	9		4	5	1	
			2	1			

Hard

	3				7	6	
	7	4	5	8	3		2
3	9		8	4	2		6
			7				
			3		2	4	
			6				
					7		
6	5	9					4



## Contacts

Justices of the Peace	
Mr Colin Connolly	9865 1010
Mr Geoff Sabourne	9865 1171
Mrs Amanda Milton	0429 654 011
Mr Colin Dunkeld	98711 556
Mrs Rosy Sinclair	9874 7045

Services	
Emergency Services	000
LG Police Department	9890 2000
Hospital	9890 2222
Poisons Info.	13 11 26
Western Power	13 13 51
Water Corp	13 13 75
Directory Assistance	1223

Lake Grace Shire Councillors		
Councillor	Telephone	Email
Len Armstrong ( <i>President</i> )	0429 843 785	cramstrong@lakegrace.wa.gov.au
Ross Chappell ( <i>Deputy</i> )	0428 654 058	crchappell@lakegrace.wa.gov.au
Debrah Clarke	0428 654 041	crclarke@lakegrace.wa.gov.au
Benjamin Hyde	0428 752 042	crhyde@lakegrace.wa.gov.au
Roz Lloyd	0428 711 534	crilloyd@lakegrace.wa.gov.au
Anton Kuchling	0427 206 030	crkuchling@lakegrace.wa.gov.au
Jeff McKenzie	0458 693 014	crmckenzie@lakegrace.wa.gov.au
Steve Hunt	0427 651 585	crhunt@lakegrace.wa.gov.au



Local Services	
Lake Grace Medical Centre	9865 1208
Newdegate Medical Centre	9871 1528
Dentist (Dr Bryan Flemming)	97955 511
Child Health Nurse	9890 2246

**Newdegate Phone Books available at the CRC for \$7**

# Community Calendar

## November 2023

<b>Wed 22nd</b>	Shire Council Meeting in Lake Grace @15:30
<b>Thurs 23rd</b>	Christmas Shopping Day @ Country Club 10:30-3pm Basketball
<b>Mon 27th</b>	Playgroup -Christmas Activity Morning
<b>Thurs 30th</b>	Basketball

## December 2023

<b>Sat 2nd</b>	Christmas Wreath Making Workshop Pennants -Round 6
<b>Thurs 7th</b>	Basketball
<b>Fri 8th</b>	ELF Movie Night
<b>Fri 15th</b>	Basketball Christmas Party
<b>Sat 16th</b>	Newdegate Xmas Tree Pennants -Round 7
<b>Sun 17th</b>	Lake Biddy Xmas Tree
<b>Wed 20th</b>	Shire Council Meeting in Lake Grace @15:30
<b>Sun 24th</b>	Christmas Eve
<b>Mon 25th</b>	Christmas Day
<b>Tues 26th</b>	Boxing Day
<b>Fri 31st</b>	New Years Eve

### Newdegate Defibrillator Locations

- |  |   |
|--|---|
| ⇒ Newdegate Ambulance Shed<br><i>May Street</i>    | ⇒ <i>201 Newdegate North Road</i>                         |
| ⇒ Newdegate Grocer & Café<br><i>5 Maley Street</i> | ⇒ Newdegate Country Club<br><i>Newdegate/Pingrup Road</i> |
| ⇒ Newdegate Hotel<br><i>1 Maley Street</i>         | ⇒ Newdegate Swimming Pool<br><i>Mitchell Street</i>       |
| ⇒ Newdegate Rec Centre<br><i>Waddell Street</i>    | ⇒ Newdegate Tennis Club<br><i>Waddell Street</i>          |
| ⇒ Newdegate Motel & Caravan Park                   | ⇒ Newdegate Post Office<br><i>7 Maley Street</i>          |

